

# **ARB** FITTING INSTRUCTIONS

## GLX & VX LANDCRUISER 80 SERIES SIDE RAILS WITH STEPS

PRODUCT No 4411010

### PROCEDURE -

1. Fit the rubber plugs into the rear end of the side rails and the front end of the front rails. Fig 3.
2. Take the passenger side (L/H) rear step and fit it up to the vehicle. Insert the rear U-bolt first. When doing this on the passenger side of the vehicle, lift the brake lines out of the plastic bracket on the side of the chassis, then slip the U-bolt under the brake lines. Cover the U-bolt with the self adhesive foam tape provided. This will eliminate metal to metal contact when the brake lines are pressed back into the plastic brackets. Fig. 1
3. When fitting the front U-bolt on the passenger side, loosen the brake line bracket and remove the 8mm bolt holding it. Fit the U-bolt under the brake lines, and tighten the U-bolt nuts. Refit the brake line bracket using the 15mm spacer and M8x25mm bolt supplied. Fig. 2
4. Repeat steps (3) & (4) above for drivers' side, with the exception of the brake line movements.
5. Take passenger side front rail, and slide it over the tube insert at the front of the rear rail. Insert one M8x20 bolt through the bracket at the joint of the rear and front rail and hand tighten.
6. Check for fitment of the front rail to the bulbar. It may be necessary to cut a small amount off of the front rail to give a good fit. If this is done, do not forget to tough up the cut end of the tube with some paint to prevent corrosion.
7. Locate the side rail to the bulbar using the bulbar clamps. To hold these in place while you drill the tube, use vice grips or clamps as shown in Fig. 4 & 7. Drill through the front rail and the bulbar with an 8mm drill. (Be careful not to damage the headlights on the vehicle) Then insert the M8x70mm coach bolts, with flat and spring washers and tighten.
8. Where the side rail and the front rail join, you will see that there is provision for two bolts in the brackets. Once you have aligned the front rails as required, you will need to drill an 8mm hole through the second bracket as shown if Fig. 8, and then fit the second M8x20mm bolt, washer and nut, and then tighten both bolts.

12/02/03

1 of 4

3783025

# **ARB** FITTING INSTRUCTIONS

9. Fasten tread plate to the rear rails using M6x25mm dome head bolts, nuts, flat & spring washers. Before tightening the bolts, run a bead of silicon sealant between the checker plate and the rear rail. This will prevent any rattling of the tread plates.

Fig. 1

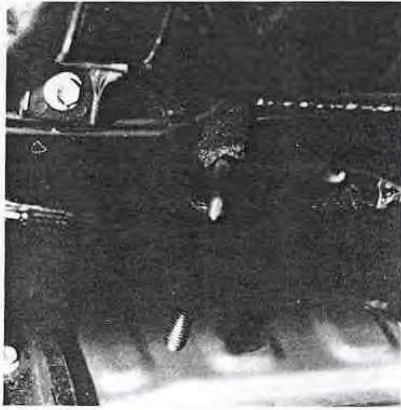


Fig. 2

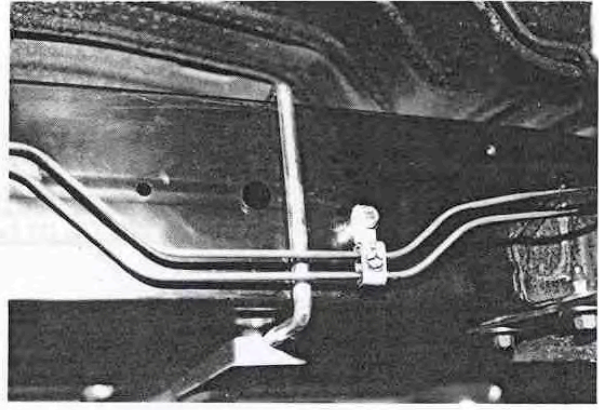


Fig. 3



Fig. 4

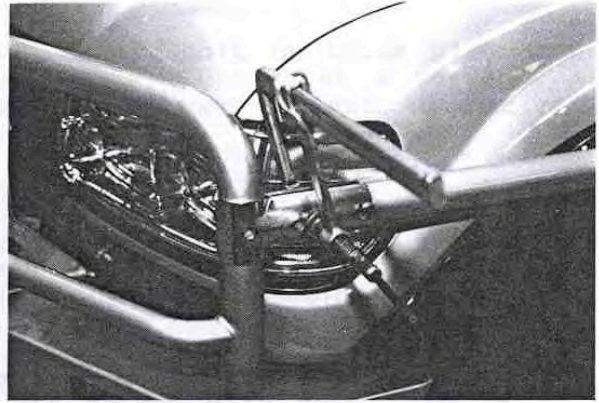


Fig. 5

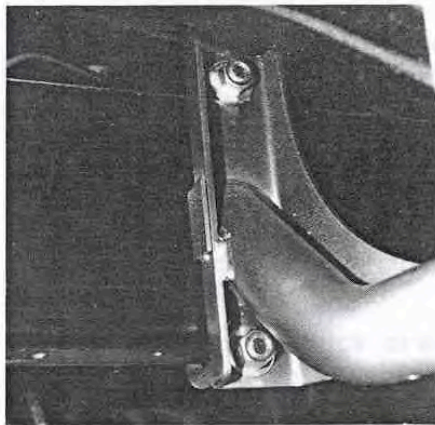


Fig. 6

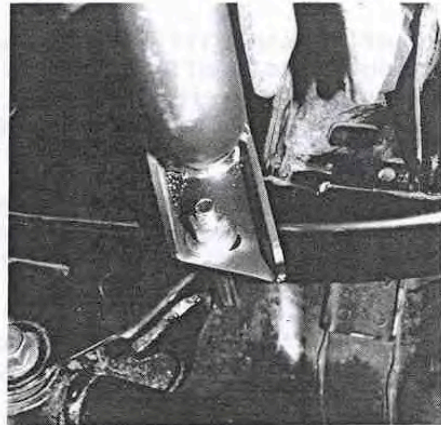
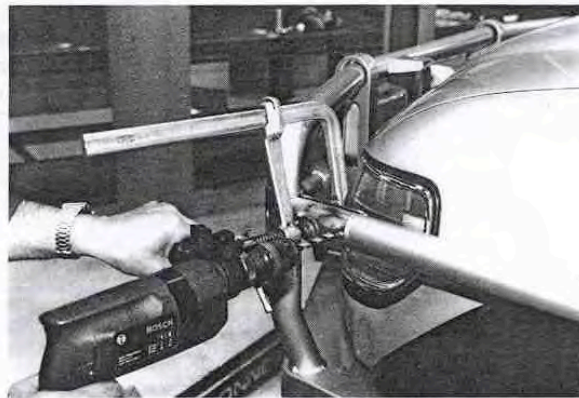


Fig. 7



# **ARB** FITTING INSTRUCTIONS



FIG - 8