



FITTING INSTRUCTIONS

Part Number: **3723010**
Compatible Racks: **3800250 & 3800253**
Description: **TOYOTA TACOMA Gen II 04-15 & Gen III 16 ON CAB RACK FIT KIT**
- DOUBLE CAB ONLY

WARNING

- ◆ This product must be installed exactly as per these instructions using only the hardware supplied.
- ◆ In the event of damage, contact your nearest authorized ARB dealer.
- ◆ Do not use this product for any vehicle make or model, other than those specified by ARB.
- ◆ Do not remove labels.
- ◆ This product or its fixing must not be modified in any way.
- ◆ The installation of this product may require the use of specialized tools and/or techniques
- ◆ It is recommended that this product is only installed by trained personnel
- ◆ These instructions are correct as at the publication date. ARB Corporation Ltd. cannot be held responsible for the impact of any changes subsequently made by the vehicle manufacturer
- ◆ During installation, it is the duty of the installer to check correct operation/clearances of all components
- ◆ Work safely at all times
- ◆ Unless otherwise instructed, tighten fasteners to specified torque

www.arb.com.au
Corporate Head Office

42-44 Garden St
Kilsyth, Victoria
AUSTRALIA 3137

Tel: +61 (3) 9761 6622
Fax: +61 (3) 9761 6807

SAFETY

NOTE THE FOLLOWING:

Your ARB Roof Rack has a maximum carrying capacity of 45kg. This load should not be exceeded and all loads must be tied down securely. If you have a cage with mesh fitted, secure the load to the main framing of the cage as well as the mesh.

It is important to follow the listed usage instructions;

- ◆ The vehicle owner's manual should be consulted prior to loading the roof rack as the manufacturer's recommended maximum load for the vehicle's roof may be less than the maximum load specified for the roof rack.
- ◆ Load must be evenly distributed and adequately secured.
- ◆ Any weight carried on the roof of the vehicle will adversely affect its handling, particularly in cornering or in a cross-wind, the vehicle should therefore be driven with increased discretion.
- ◆ Regularly check the tightness of the securing clamps and the security of the load.
- ◆ Attention is directed to statutory requirements regarding maximum permissible projections from vehicles.



All bolts should be checked prior to touring to ensure the rack is fastened correctly

FITTING REQUIREMENTS

REQUIRED TOOLS FOR FITMENT OF PRODUCT:

Metric socket set	Non-acidic silicone (neutral cure)
Blade and Phillips head screw drivers	Power Drill, 6.5mm drill bit
Metric Allen key set up to 6mm	Scissors or sharp knife
Torque wrench	Masking tape

HAVE AVAILABLE THESE SAFETY ITEMS WHEN FITTING PRODUCT:

Protective eyewear 	Hearing protection 
--	--

NOTE: 'WARNING' notes in the fitting procedure relate to OHS situations, where to avoid a potentially hazardous situation it is suggested that protective safety gear be worn or a safe work procedure be employed. If these notes and warnings are not heeded, injury may result.

FASTENER TORQUE SETTINGS:

SIZE	Torque Nm	Torque lb-ft
M6	3.5 Nm	2.5 lb-ft
M8	8.5 Nm	6.3 lb-ft
M10	17 Nm	12 lb-ft
M12	30 Nm	22 lb-ft

Parts Listing

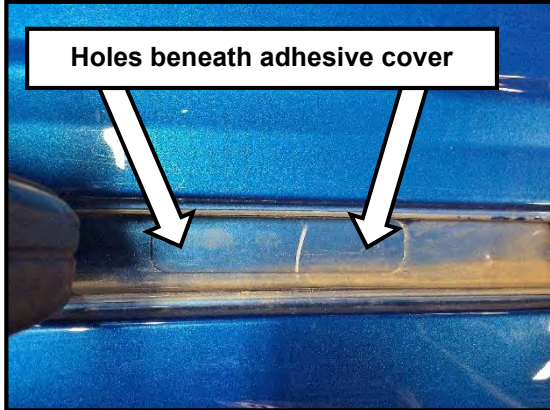
APPLICATION	PART NO.	QTY.	DESCRIPTION
Brackets to Vehicle	3750029L	1	Bracket Main Rail L
	3750029R	1	Bracket Main Rail R
	6151588	10	SHCS Low Profile SS M6 x 1.0 x 20
	4581072	10	Flat Washer M6 x 20 x 1.6
	4581305	10	Spring Washer SS M6
	6781408	4	Double Sided Tape .8 x 15 x 300
	5848446	2	Packer Rubber 19x50
	5848447	2	Packer Rubber 19x108
	5846403	2	Packer Rubber 19x90
Roof Rack to Brackets	3193522	4	Plate "L" Shaped Weld Nut
	6151184	8	SHCS Nylon Patch SS M8 x 1.25 x 30
	4581081	8	Flat Washer SS M8
	4581094	8	Spring Washer SS M8

Installation of Brackets to Vehicle



1. Remove the roof sill liner by prying off from the front and peeling.

Warning: Use caution with tools around the vehicle's painted surfaces.

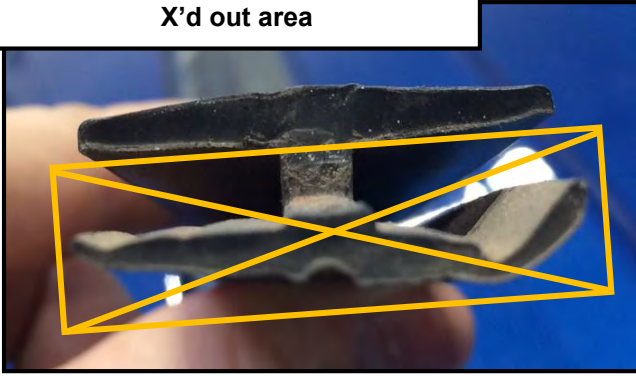


2. Find the (5) holes covered with an adhesive covering inside the roof sill. There are (2) towards the front, (1) in the middle, and (2) towards the rear. The supplied bracket can be used as a template to locate these holes.
3. Using a blade, cut X's in the adhesive cover where each hole is located.



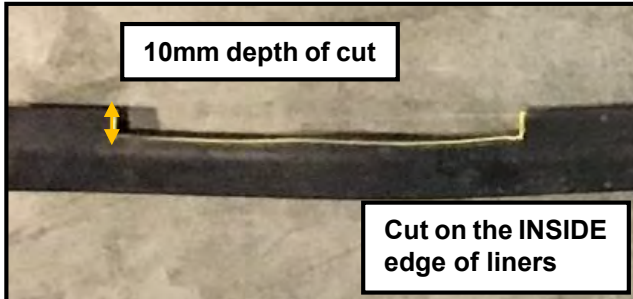
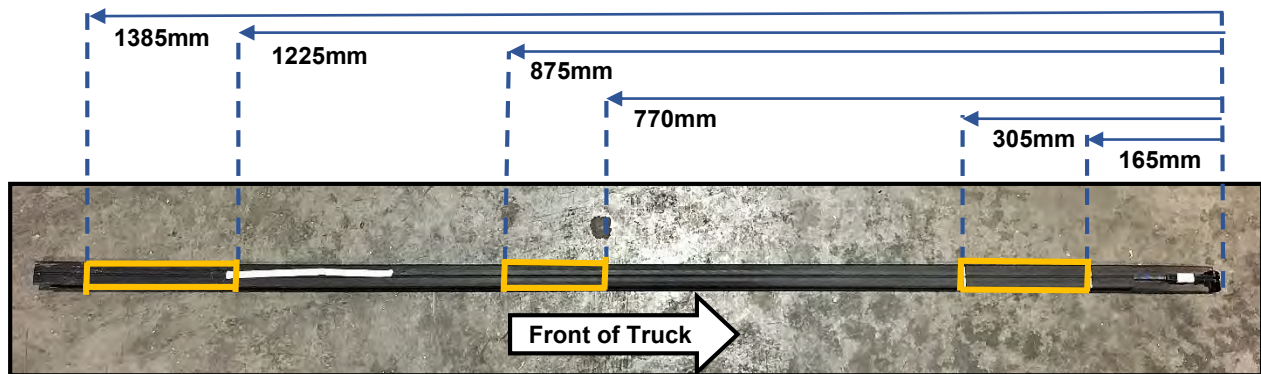
4. Place the (2) Main Rail Brackets into place in the roof sill with the corresponding rubber packers in between the brackets and vehicle. Secure with M6 x 20 socket head cap screws, spring washers, and flat washers. Once each cap screw has been installed hand tight, torque each to the specified torque value.

Cut roof sill liner here to remove
X'd out area



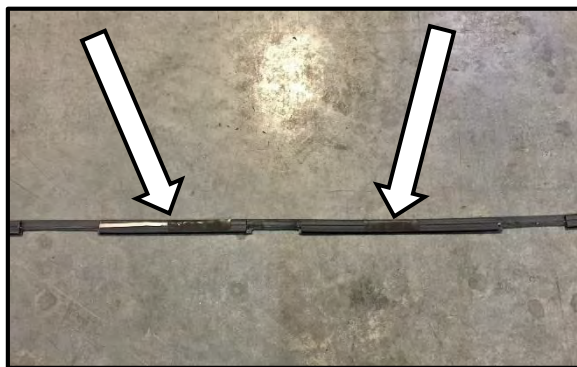
- Align the roof sill liner up to the installed brackets and mark where clearance cuts will need to be made for re-installation, as shown in the diagram below. Trim the bottom portion of the sill liner off, in the highlighted areas, as shown in the adjacent diagram.

WARNING: These dimensions are meant to be a reference only. Align the roof sill liner to the bracket installed on the vehicle and mark to double check fitment.



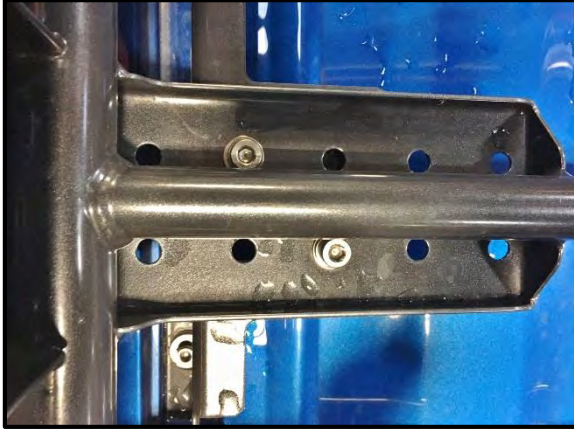
- Trim the inside edge of the roof sill liners in the same areas as step 6, as shown in the adjacent diagram.

WARNING: These dimensions are meant to be a reference only. Align the roof sill liner to the bracket installed on the vehicle and mark to double check fitment.



- Fit up the trimmed roof sill liners over the installed brackets on their respective sides to ensure that they fit correctly.
- Once fitment is validated, clean the bottom surface of the liner and corresponding locations in the vehicle sill, apply double sided tape in areas between the (3) cuts as shown.
- Re-install the trimmed roof sill liner back into the roof sill.

Installation of Cab Rack to Brackets



10. With (4) people, carefully lift the cab rack onto the brackets aligning the mounting holes of the rack with the mounting slots of the brackets.
11. Secure the rack to the brackets by hand tightening the M8 x 30 socket head cap screws, spring washer, and flat washers into the "L" shaped nut plate as shown.



12. Center and straighten the rack laterally about the vehicle.
13. When the rack is centered and straight, tighten all fasteners to the specified torque values.