



# FITTING INSTRUCTIONS

Part Number: **813409**

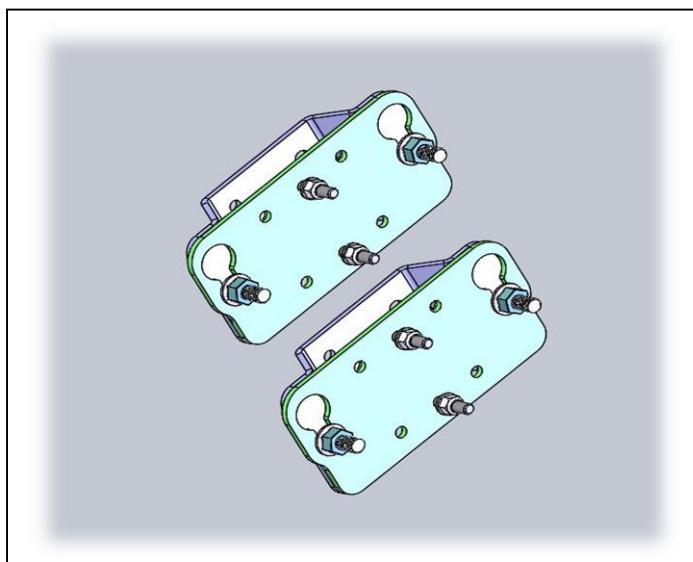
Product **QUICK RELEASE AWNING MOUNTS – RETRO FIT**

Description: **FOR USE WITH RACKS WHERE AWNING HAS BEEN PREVIOUSLY INSTALLED**

Suited to **ARB AWNINGS ONTO ARB ROOF RACKS**  
vehicle/s:

## NOTE THE FOLLOWING:

- ◆ This product must be installed as per these instructions using only the hardware supplied.
- ◆ In the event of damage to any component, contact your nearest authorised ARB stockist.
- ◆ During installation, it is the duty of the installer to check correct operation/clearances of all components
- ◆ Unless otherwise instructed, tighten fasteners to specified torque
- ◆ Periodically check tightness of all bolts, including pre trip preparation



## ARB 4x4 ACCESSORIES

Corporate Head Office

42-44 Garden St  
Kilsyth, Victoria  
AUSTRALIA 3137

Tel: +61 (3) 9761 6622  
Fax: +61 (3) 9761 6807

Australian enquiries  
North & South American enquiries  
Other international enquiries

[sales@arb.com.au](mailto:sales@arb.com.au)  
[sales@arb.com.au](mailto:sales@arb.com.au)  
[exports@arb.com.au](mailto:exports@arb.com.au)

## FITTING REQUIREMENTS

### REQUIRED TOOLS FOR FITMENT OF PRODUCT:

<b>METRIC HEX KEY SET</b>	<b>TAPE MEASURE</b>
<b>10&amp; 13MM SPANNERS</b>	<b>SCISSORS</b>

### FASTENER TORQUE SETTINGS:

SIZE	Torque Nm	Torque lbft
M6	9Nm	7lbft
M8	22Nm	16lbft

### PARTS LISTING- 813409

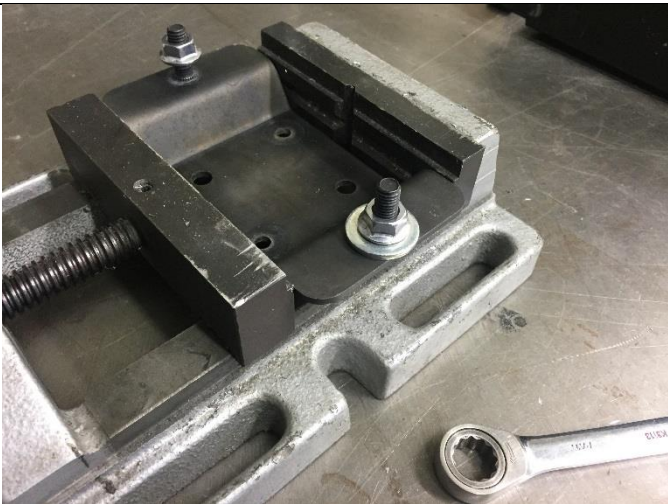
APPLICATION.	PART NO.	QTY	DESCRIPTION
AWNING BRACKET INSTALLATION			
	3195075	2	PLATE AWNING QUICK RELEASE
	3750295	2	BRACKET AWNING QUICK RELEASE
	6151312	4	SCREW BUTTON HEAD M6 X 25
	4581034	8	WASHER FLAT M6
	6151162	4	NUT NYLOCK M6
	6151869	4	STUD KNURLED M8
	6151655	4	NUT FLANGE M8
	4584361	1	WASHER FLAT M10
	3789817	1	FITTING INSTRUCTIONS

## BRACKET PREPARATION



Insert the M8 knurled stud into the awning bracket in the direction shown.

Place the M10 washer over the stud and then install a M8 flange nut onto the stud.



Place the bracket into a vice. Tighten the M8 nut against the washer to pull the knurled stud into the bracket.

Continue to tighten the nut until the back of the knurled stud is home against the back of the bracket.

Complete this step on the second bracket installing 2 studs into each bracket.



## INSTALLATION PROCEDURE



Place the mount plate onto the roof rack and attach using 2 x M6 x 25 setscrews and nyloc nuts into the previously drilled holes in the roof rack. Place washers under both the screw and nut.



Measure centre pitch on awning mount brackets.



Install awning brackets on to awning and set at the required pitch taken from the previous step.

Position brackets so that the awning will sit in the desired location on vehicle when installed.

Fasten using fasteners supplied with the awning. Position fasteners diagonally opposite each other as shown.

Tighten to the specified torque.



Install 1 M8 flange nut loosely onto each knurled stud.

Place the awning onto the mounts by passing the M8 nut through the key hole on the roof mount and sliding down to the bottom of the slot.

Secure the awning to the roof mount by tightening the M8 nut to the specified torque.

To remove awning, loosen M8 flange nuts and lift awning up and away from vehicle. Awning mount brackets will remain attached to vehicle.