



NOT LEGAL FOR SALE OR USE ON ANY POLLUTION CONTROLLED MOTOR VEHICLE IN CALIFORNIA OR STATES ADOPTING CALIFORNIA EMISSION PROCEDURES.

See knfilters.com for CARB status on each part for a specific vehicle

INSTALLATION INSTRUCTIONS

77-2618KC

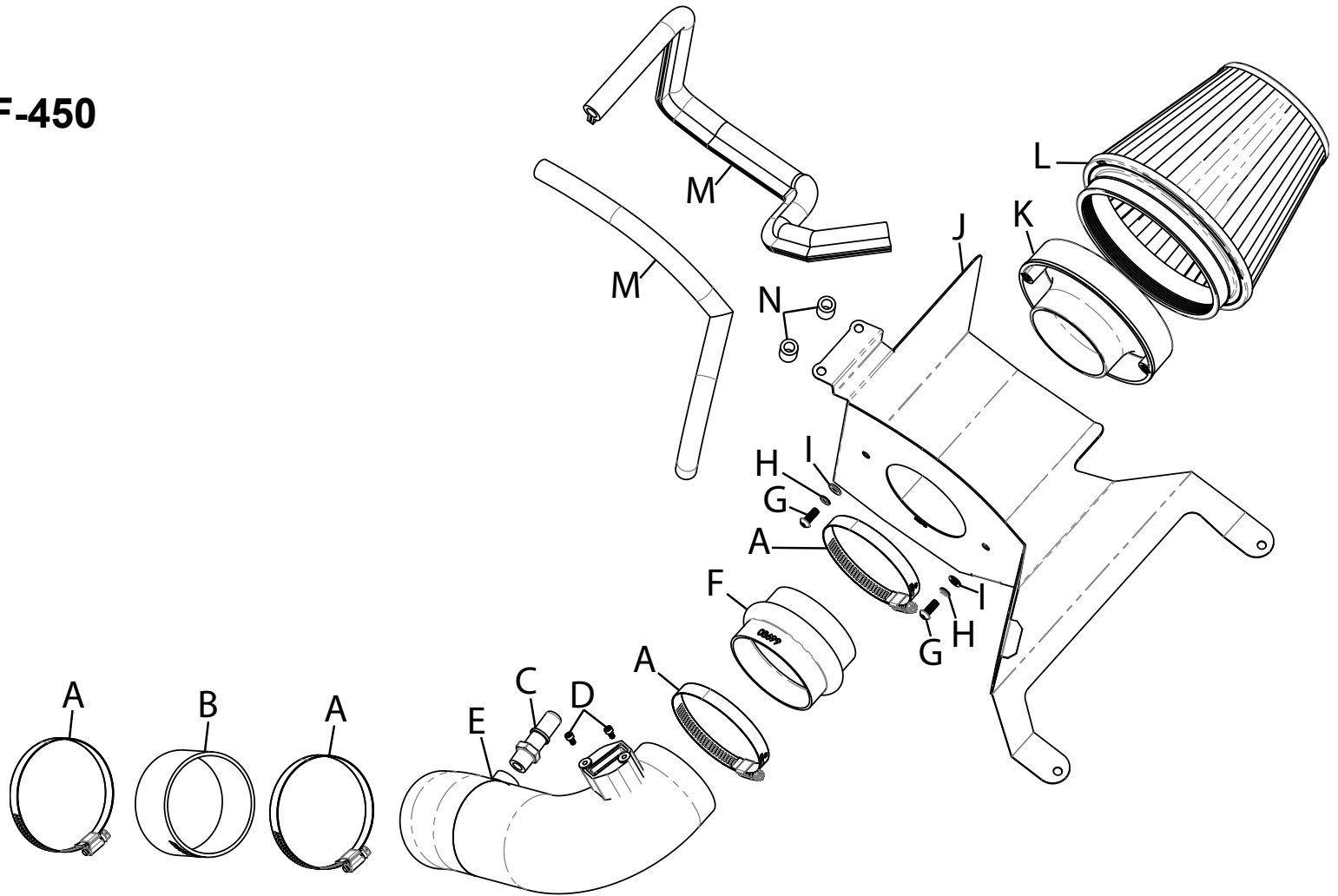
FORD

2021-22 E350 / F-450

V8-7.3L

TOOLS NEEDED:

Flat blade screw driver
Ratchet
Extension
8mm socket
3mm allen key
4mm allen key
Adjustable wrench
T20 torx
side cutters
adjustable wrench
pipe tread sealant



PARTS LIST:

Description	Qty.	Part #	Description	Qty.	Part #	Description	Qty.	Part #
A HOSE CLAMP; #56	4	08620	F HOSE; HUMP 3.5"ID X 2.5"L	1	08699	K ADAPTER; 3.5" COUPLER	1	21512-1
B HOSE; 3.5"ID X 2"L	1	08698	G BOLT; M6 X 1 X 16MM BTNHD	2	07730	L AIR FILTER	1	RU-1042
C FITTING; 3/8NPT TO .620"	1	82637	H WASHER; M6, SPLIT LOCK	2	1-3025	M EDGE TRIM; 42"L	1	102499
D BOLT; M4-.7 X 8MM	2	07733	I WASHER; 6MM FLAT	2	08269	N SPACER; .625"OD X .375"ID	2	07849
E TUBE; 3.5"OD X 13"L	1	25899C	J HEAT SHIELD	1	074561			

If you need any assistance please call 1-800-858-3333 to speak with a representative in our Customer Service Center before returning the product.

NOTE: FAILURE TO FOLLOW INSTALLATION INSTRUCTIONS AND NOT USING THE PROVIDED HARDWARE MAY DAMAGE THE INTAKE TUBE, THROTTLE BODY AND ENGINE.

TO START:

1. Turn off the ignition and disconnect the negative battery cable.

NOTE: Disconnecting the negative battery cable erases pre-programmed electronic memories. Write down all memory settings before disconnecting the negative battery cable. Some radios will require an anti-theft code to be entered after the battery is reconnected. The anti-theft code is typically supplied with your owner's manual. In the event your vehicles anti-theft code cannot be recovered, contact an authorized dealership to obtain your vehicles anti-theft code.



2. Disconnect the mass air sensor electrical connection and unhook the harness.



3. Loosen the hose clamp that secures the factory intake tube to the filter housing.



4. Release the locking clips and then remove the air filter housing from the vehicle.



5. Remove the two bolts that secure the lower air filter housing to the cowl. These Bolts will be reused with the K&N intake system.



6. Remove the two front air filter housing mounting bolts then remove the lower air filter housing from the vehicle. These bolts will be reused.



7. Disconnect the CCV quick connect fitting near the throttle body.



8. Loosen the hose clamp that secures the intake tube to the throttle body and then remove the intake tube from the vehicle.



9. Cut the provided edge trim to 16" and 25" and then install onto the K&N heat shield as shown.



10. Install the filter adapter into the heat shield using the provided hardware.



11. Install the heat shield assembly into the vehicle, position the provided spacers under the rear mounting location and then secure with the factory air filter housing mounting hardware.



12. Remove the mass air sensor from the factory housing and install it into the K&N intake tube using the provided hardware. Install the provided CCV quick connect fitting into the K&N intake tube. **NOTE: Be sure to use thread sealant on the threads of the supplied CCV fitting.**



13. Install the provided hump coupler onto the filter adapter and secure with the provided hose clamp.



14. Install the provided straight coupler onto the throttle body and secure with provided hose clamp.



15. Install the K&N intake tube into the coupler at the throttle body and then into the coupler at the filter adapter, adjust for best fit and then secure with the provided hose clamps.



16. Connect the CCV quick connect fitting and mass air sensor electrical connection.



17. Install the K&N air filter and secure with the provided hose clamp.



18. Apply the K&N decal where shown.



19. Reconnect the vehicle's negative battery cable. Double check to make sure everything is tight and properly positioned before starting the vehicle.

20. It will be necessary for all K&N® high flow intake systems to be checked periodically for realignment, clearance and tightening of all connections. Failure to follow the above instructions or proper maintenance may void warranty.

ROAD TESTING:

1. Start the engine with the transmission in neutral or park, and the parking brake engaged. Listen for air leaks or odd noises. For air leaks secure hoses and connections. For odd noises, find cause and repair before proceeding. This kit will function identically to the factory system except for being louder and much more responsive.

2. Test drive the vehicle. Listen for odd noises or rattles and fix as necessary.

3. If road test is fine, you can now enjoy the added power and performance from your kit.

4. K&N Engineering, Inc., requires cleaning the intake system's air filter element every 100,000 miles. When used in dusty or off-road environments, our filters will require cleaning more often. We recommend that you visually inspect your filter once every 25,000 miles to determine if the screen is still visible. When the screen is no longer visible some place on the filter element, it is time to clean it. To clean and re-oil, purchase our filter Recharger® service kit, part number 99-5050 or 99-5000 and follow the easy instructions.

NOT LEGAL FOR SALE OR USE ON ANY POLLUTION CONTROLLED MOTOR VEHICLE IN CALIFORNIA OR STATES ADOPTING CALIFORNIA EMISSION PROCEDURES.

See knfilters.com for CARB status on each part for a specific vehicle