



Gladiator Mesh Bimini Top Plus Installation Instructions

Congratulations on your purchase of a Rough Country Mesh Top. Please Confirm the correct model was ordered and received. A general knowledge of your vehicle is useful and understanding on existing top removal on the Jeep is required.

We are excited that you have chosen a Rough Country Mesh Bimini Top. These high quality tops are designed to enhance your fair weather driving pleasure while providing needed shade while driving in the hot sun and protecting the interior. Please note that it is important that you become familiar with the installation process of this top by reading the following instruction sheet and warnings thoroughly. Though we have used only the finest materials in creating this top, any product that is exposed to the elements requires some general maintenance to keep it looking like new. Please see page 4 for these important maintenance tips. Please also note that it is normal for the mesh fabric to contract and wrinkle when stored in the shipping carton. In a few days the fabric will relax and wrinkles will disappear. If any questions arise, please call Rough Country customer service.

▲ NOTICE Instruction Sheet Strap Installation Note

Installing the Rough Country Mesh tops entails the wrapping of nylon webbing around several locations on your factory installed sport bar. In all cases, the straps are to be wrapped around the sport bar and not just around the door surround.

Threading Straps through Buckles:

Throughout the installation, you will need to thread webbing straps through buckles several times. Please review the picture for correct strap routing through the buckles. As a rule of thumb, run the strap below and through the sewn side of the buckle first and then back down through the end of the buckle. Tighten the strap by simply pulling the exposed webbing after threading the strap through the buckle.



▲ WARNING

Loss of vehicle control involves risk of death or serious injury, particularly to parts of your body not restrained within vehicle. This product is intended for moderate weather protection only and should not be relied upon to contain occupants in the event of an accident or to protect from either ground contact or falling objects. To reduce risk of accident or injury:

- **ALWAYS WEAR SEATBELTS**
- **Always keep head, arms & body parts within vehicle.**
- **Fully secure or stow the soft top before driving according to instructions. Never try to latch or fold soft top while driving. Do not use if damaged or worn.**
- **Read and follow all instructions & warnings accompanying this product, in your vehicle owner's manual and Off Road Driving Supplement**

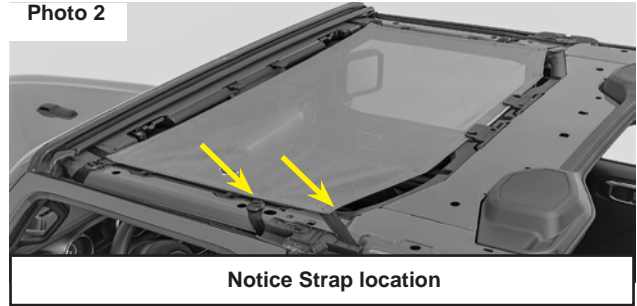
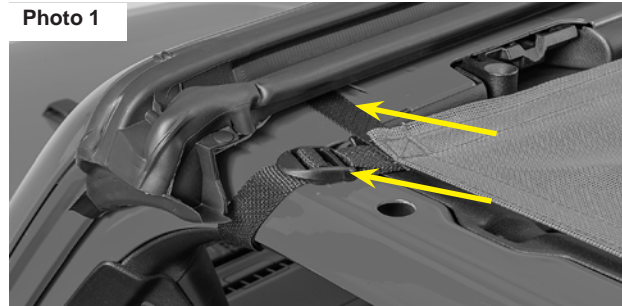
▲ NOTICE Remove your factory hard or soft top before installation. For those vehicles with a factory soft top, you will NOT be using your factory soft top header for this installation.

The Rough Country Mesh Bimini top series are designed as an easy-on, easy off sun shade for your Jeep. The tight mesh weave is specially designed to block the heat caused by the sun while letting light and air to flow freely. The installation of these products is easy requiring no windshield header, and allows this product to be left on while you run your hard or your soft top. Enjoy the shade and thank you for purchasing Rough Country products!



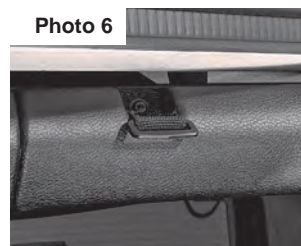
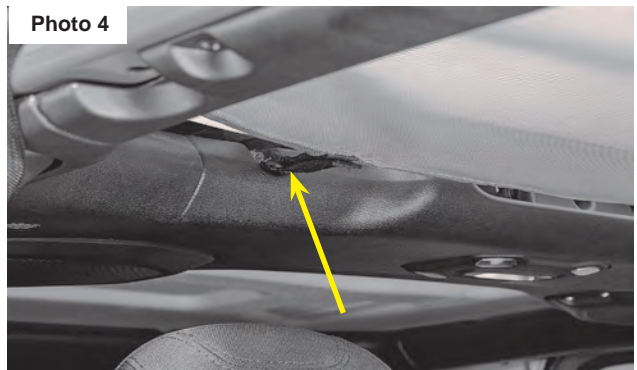
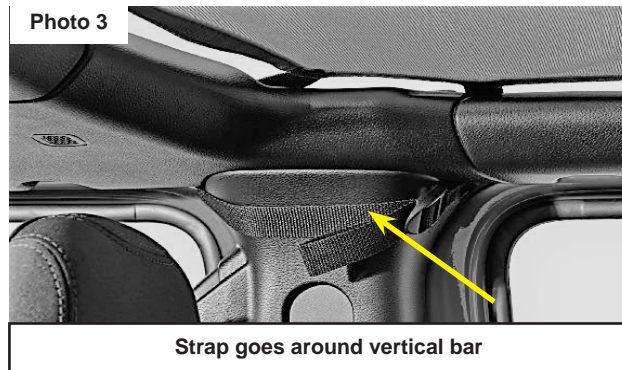
2020-Current Gladiator Rough Country Mesh Bimini Top Installation

1. Put on safety glasses. Remove your factory hard top or soft top.
2. Locate the front section of your top and drape the front mesh fabric over the top of your Jeep with the flat straight edge facing forward.
3. Wrap the long front straps around the Sport Bar, through the gap between the front roll bar and the windshield and back to the buckle on the strap. **See Photo 1.** Repeat on the other side of the vehicle.
4. Tighten each side strap making sure the top is centered on the vehicle. Adjust as necessary.
5. Locate the two rear corner straps and wrap around the "B" pillar. Thread the straps through the buckle and secure making sure the top is centered on the vehicle. **See Photo 2 & 3.** Repeat on the other side of the vehicle.



6. Once the rear corner straps are secure and the top is centered, locate the supplied two rear center hook and loop straps sewn onto the end of the top. **NOTE:** For shipping we have attached the tabs that will be installed to your sound bar to the rear of your top. **SEE Photo 4**

7. Using a T25 Torx bit (found in your on-board Torx tool kit) and driver, remove the screw on the sound bar header and install the webbing using the same screw (**Photo 5 & 6**). Thread the Hook and loop strap on the rear of the mesh top through the rectangle loop and tighten (**Photo 7 & 8**). Repeat this procedure for the second screw/strap location. Secure all straps while making sure the top is centered. When centered properly, the top will have very few if any wrinkles in it.



8. On the Rear Mesh, locate the two center buckle straps with the hook straps. **Photo 11**. Thread the hook straps into the hooks and hook the straps into the oblong holes located directly in front of the buckles. The Hooks will seem too big for these holes but they will go in if you twist them slightly back and forth. Do not tighten yet.

9. Locate the two outside front straps on the rear mesh as circled in **Photo 12**. Wrap the straps under the B-Pillar/Sound bar and back to the top buckle attached to the rear mesh **Photo 13**. Repeat on the other side and then tighten these straps.

Photo 11

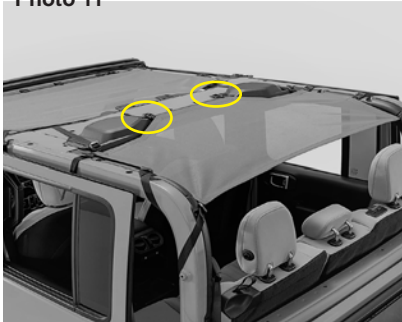


Photo 12

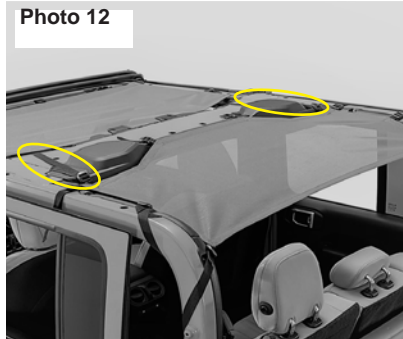
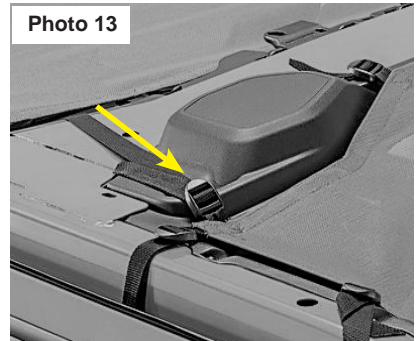


Photo 13



10. Locate the first side strap circled in **Photo 14**. This strap will wrap around the roll bar and attach to the buckle located on the rear mesh top. Connect this strap to the buckle. Repeat this on the opposite side and tighten these straps starting on one side and then going back and forth to make sure the top is centered. **Photo 15**

Photo 14



Photo 15



11. There are two straps on each side of the rear roll bar as circled in **Photo 16**. Each of these rear straps attach directly to the factory Torx head bolts on the inside top of the roll bar as highlighted in **Photo 17**.

12. Using the T25 Torx Tool, remove the screws on the roll bar shown in **Photo 18** and install the webbing using the same screw by running the screw through the hole at the end of the strap. Once the webbing is installed on these Torx head bolts, thread the strap to the buckles as shown in **Photo 17**. Repeat on the other side and tighten all straps starting on the front rear strap working your way back towards the rear of the vehicle (starting at the center front Hook straps). Be sure to tighten one strap on one side then the other strap on the other side of the vehicle so you keep the mesh centered.

Photo 16



Photo 17

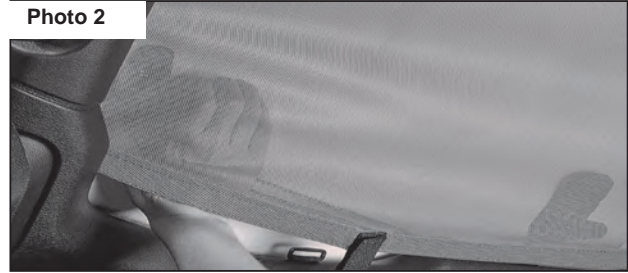


Photo 18

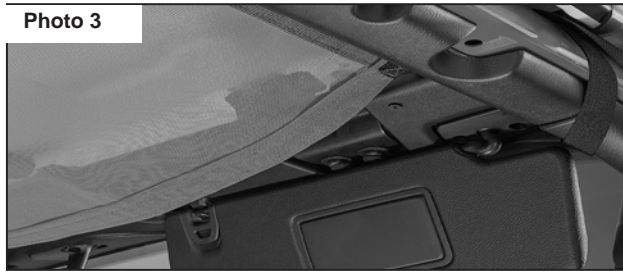


Removal or Re-installation of the Freedom Panels

Your mesh top has been designed to remain on the vehicle when you re-install your hard top and Freedom Panels. To remove or re-install your hard freedom panels, undo the hook and loop on the rectangle loop and strap installed on the sound bar in step #7 to put your hand behind the mesh (**Photo 1 & 2**). lock the rear latches and reinstall the hook and loop on the sound bar strap. Repeat on the other side.



The front latches can be installed by slipping your hand under the mesh near the front corner of the top **Photo 3 and 4** and then latch the front Freedom panel latches. Repeat on the other side of the top.



Maintenance Tips

Your Rough Country Mesh Bimini top is made of the finest materials available but to keep it looking new and for the maximum possible wear, it will need periodic cleaning and basic maintenance. The main threat to your mesh top is pollutants, dirt, and grime. By keeping your mesh top clean you will prolong the life of your top.

We recommend the following to keep your mesh top like new:

Washing:

The mesh top fabric should be washed often using mild soap, warm water, and a soft bristle brush. Make sure that after cleaning you rinse with clear water to remove all traces of soap and avoid soap residue. Hang to dry, do not put in a clothes dryer.

Thanks for choosing Rough Country for your off road needs!!

By purchasing any item sold by Rough Country, LLC, the buyer expressly warrants that he/she is in compliance with all applicable, State, and Local laws and regulations regarding the purchase, ownership, and use of the item. It shall be the buyer's responsibility to comply with all Federal, State and Local laws governing the sales of any items listed, illustrated or sold. The buyer expressly agrees to indemnify and hold harmless Rough Country, LLC for all claims resulting directly or indirectly from the purchase, ownership, or use of the items.

