



## Universal Bed Mount Tire Carrier

Thank you for choosing Rough Country for your suspension needs.

Rough Country recommends a certified technician install this system. In addition to these instructions, professional knowledge of disassembly/reassembly procedures as well as post installation checks must be known. Attempts to install this system without this knowledge and expertise may jeopardize the integrity and/or operating safety of the vehicle.

Please read instructions before beginning installation. Check the kit hardware against the parts list on this page and the product layout on the last page. Be sure you have all needed parts and know where they go. Also please review tools needed list and make sure you have needed tools.

### PRODUCT USE INFORMATION

**⚠ WARNING** As a general rule, the taller a vehicle is, the easier it will roll. Seat belts and shoulder harnesses should be worn at all times. Avoid situations where a side rollover may occur.

Generally, braking performance and capability are decreased when larger/heavier tires and wheels are used. Take this into consideration while driving. Do not add, alter, or fabricate any factory or after-market parts to increase vehicle height over the intended height of the Rough Country product purchased. Mixing component brands is not recommended.

Rough Country makes no claims regarding lifting devices and excludes any and all implied claims. We will not be responsible for any product that is altered.

If questions exist we will be happy to answer any questions concerning the design, function, and correct use of our products.

### ⚠ NOTICE NOTICE TO DEALER AND VEHICLE OWNER

Any vehicle equipped with any Rough Country product should have a "Warning to Driver" decal installed on the inside of the windshield or on the vehicle's dash. The decal should act as a constant reminder for whoever is operating the vehicle of its unique handling characteristics.

INSTALLING DEALER - it is your responsibility to install the warning decal and forward these installation instructions on to the vehicle owner for review. These instructions should be kept in the vehicle for its service

#### Torque Specs:

Size	Grade 5	Grade 8	Size	Class 8.8	Class 10.9
5/16"	15 ft/lbs	20ft/lbs	6MM	5ft/lbs	9ft/lbs
3/8"	30 ft/lbs	35ft/lbs	8MM	18ft/lbs	23ft/lbs
7/16"	45 ft/lbs	60ft/lbs	10MM	32ft/lbs	45ft/lbs
1/2"	65 ft/lbs	90ft/lbs	12MM	55ft/lbs	75ft/lbs
9/16"	95 ft/lbs	130ft/lbs	14MM	85ft/lbs	120ft/lbs
5/8"	135ft/lbs	175ft/lbs	16MM	130ft/lbs	165ft/lbs
3/4"	185ft/lbs	280ft/lbs	18MM	170ft/lbs	240ft/lbs



**KIT CONTENTS:**

Tire Carrier  
Gusset  
Universal Wheel Adapter Mount  
Adapter Mount  
2.5" Washers  
Gaskets

**TOOLS NEEDED:**

9/16 wrench and socket  
3/4 wrench and socket  
Ratchet  
Torque Wrench  
13/32 Bit  
Drill Motor  
Painters Tape  
Pen  
Tape Measure  
Width of Tire Straight Edge

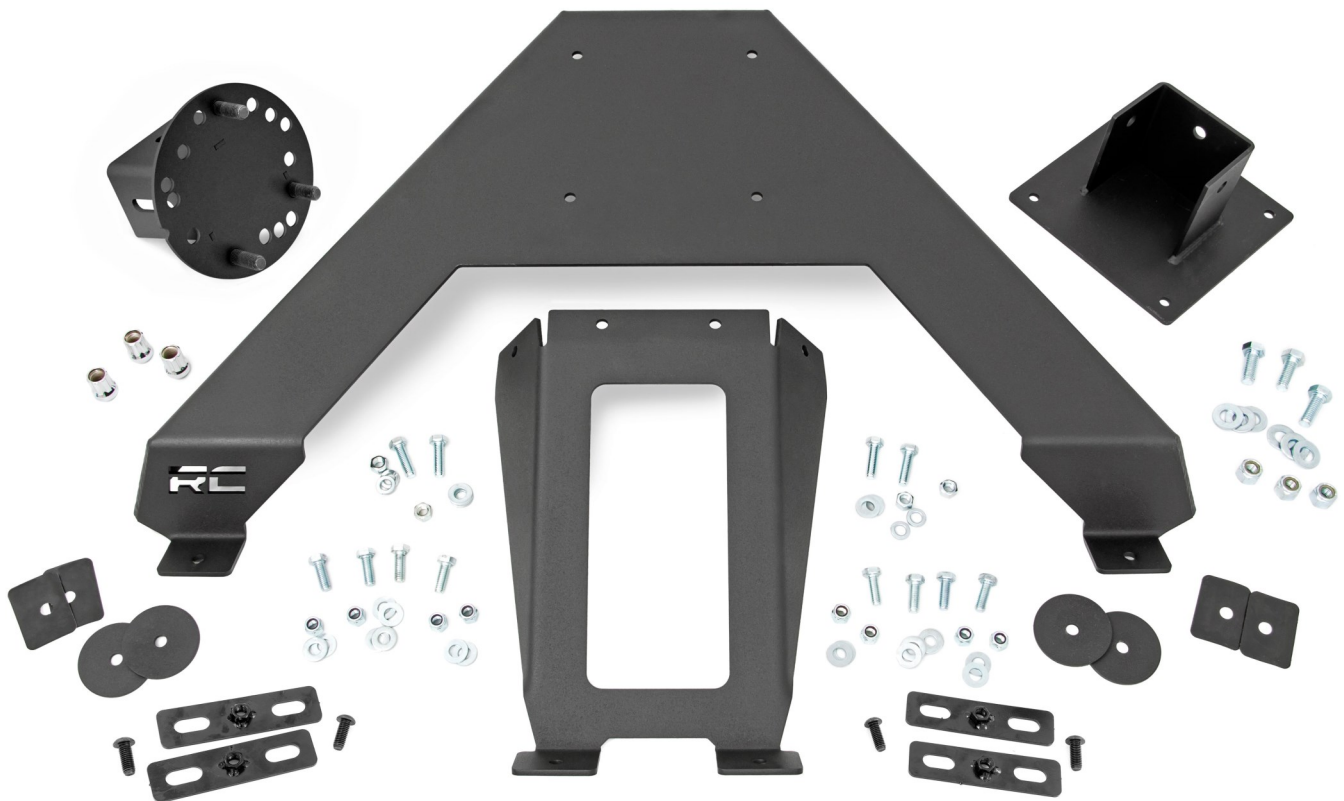
**HARDWARE INCLUDED:**

**73110BAG3:**

3/8-16 x 1 Button Head Bolts BLK x12  
1/2-13 Nylock Nut x3  
1/2-13 x 1-1/4 Hex Head Bolts x3  
1/2" Flat Washers x6  
3/8 Flat Washers x24  
3/8-16 x 1 Hex Head Bolts x 12  
3/8-16 Lock Nuts x12  
3/8-16 Clip Nuts x 8  
3/8 Lock Washer x4  
3/8-16 Nuts x4  
1/2-20 Lug Nuts x3

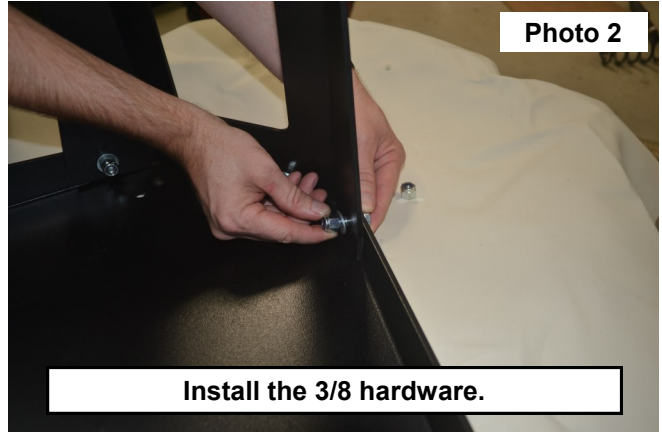
**1053BAG:**

1/2 Wheel Stud x 3  
9/16 Flat Washer x 2  
1/2-20 Hex Nut x 4  
1/2 Flat Washer x 3

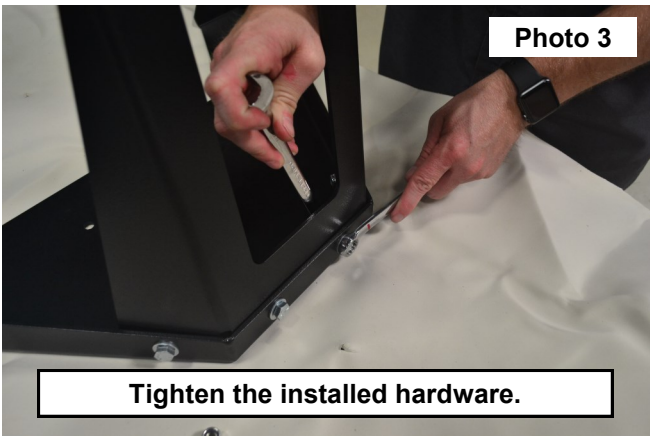


## INSTALLATION INSTRUCTONS

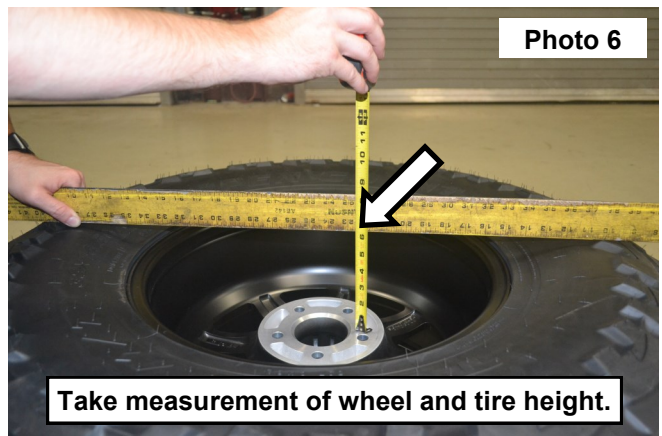
1. Install the gusset to the inside of the tire carrier using 4 of the supplied 3/8-16 x 1 hex head bolts (8) 3/8 flat washers and (4) 3/8-16 nylock nuts. **See Photo 1 and 2.**



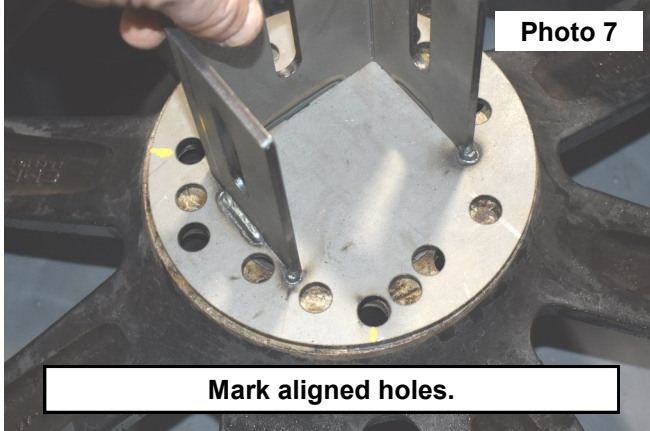
2. Torque the 3/8 hardware to 35 ft-lbs. using a 9/16 wrench and socket. **See Photo 3.**
3. Install the adapter mount onto the front side of the carrier using 4 of the supplied 3/8-16 x 1 hex head bolts (8) 3/8 flat washers and (4) 3/8-16 nylock nuts. Torque to 35 ft-lbs. using a 9/16 wrench and socket. **See Photo 4.**



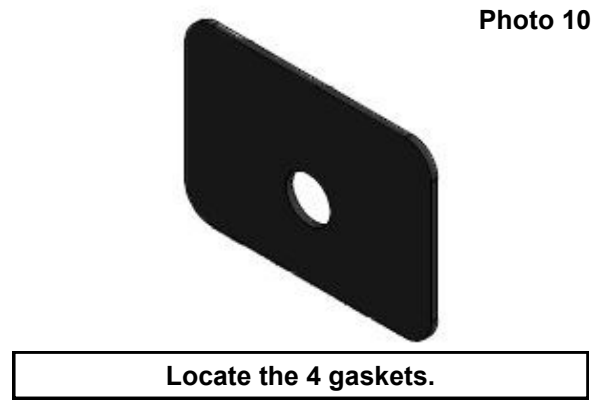
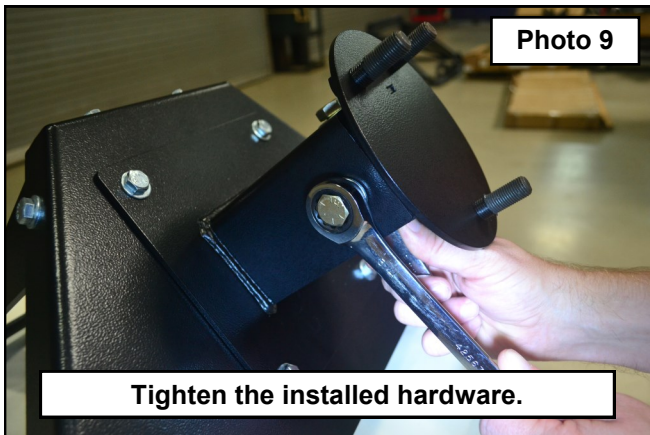
4. Install the wheel mount into the installed adapter mount using 3 of the supplied 1/2-13 x 1-1/4 hex head bolts (6) 1/2" flat washers and (3) 1/2-13 nylock nuts. **See Photo 5.** Do not tighten at this time.
5. Measure the wheel and tire that will be installed onto the mount. Laying a straight edge on the tire, take a measurement of the tire height from the mounting flange of the wheel. Take measurement \_\_\_\_\_. **See Photo 6.**



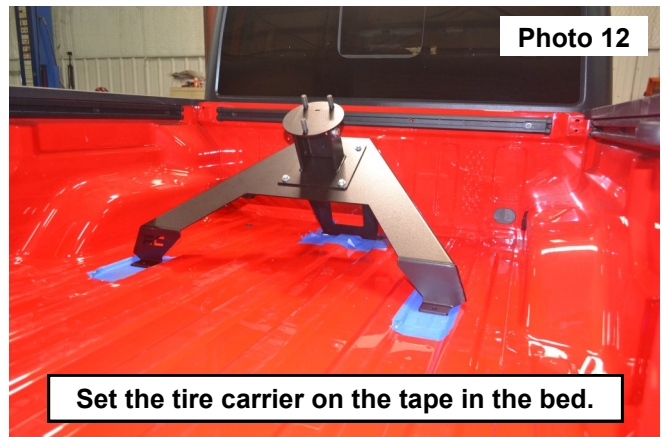
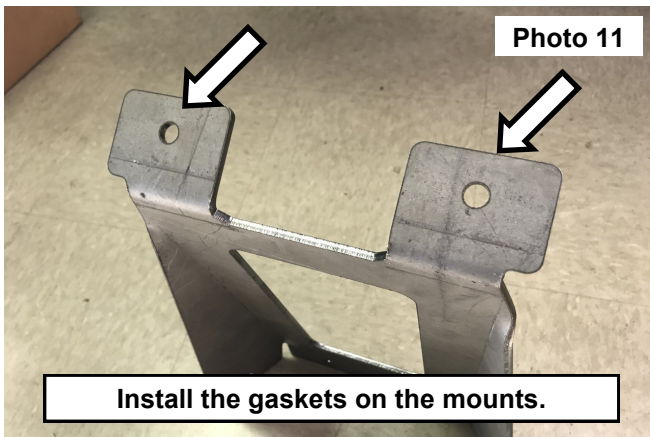
6. Place the universal mount on the wheel you wish to mount. Use a paint pen to mark where the holes in the wheel align with the mount holes. **See Photo 7.**
7. Press the supplied wheel studs into the previously marked holes.
8. Use a tape measure to set the recorded depth of the wheel mount. Torque the hardware to 90 ft-lbs. using a 3/4" wrench and socket. **See Photo 8 and Photo 9.**



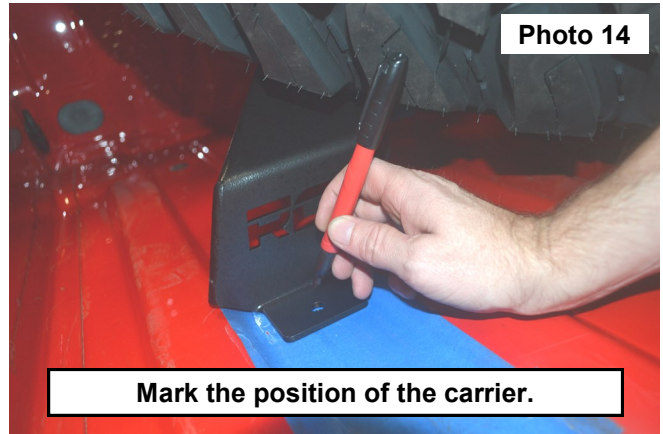
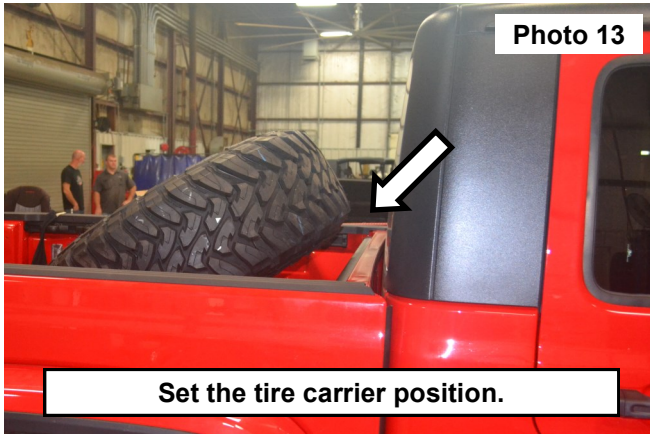
9. Locate the 4 gaskets. **See Photo 10.**



10. Install 1 of the gaskets onto each mount on the bottom of the tire carrier mount. **See Photo 11.**
11. Apply painters tape onto the bed floor of the vehicle and Set the tire carrier on the tape in the bed of the vehicle. **See Photo 12.**
12. Temporarily install the wheel and tire onto the tire carrier. Set the carrier in the desired position. Double check clear-



- ances in-between the tire and the tire carrier. **See Photo 13.**
13. Use a pen to mark the 4 mounting locations onto the painters tape. **See Photo 14.**
14. **Check clearances under the bed before drilling.** Use a 13/32 bit to center drill the marked holes

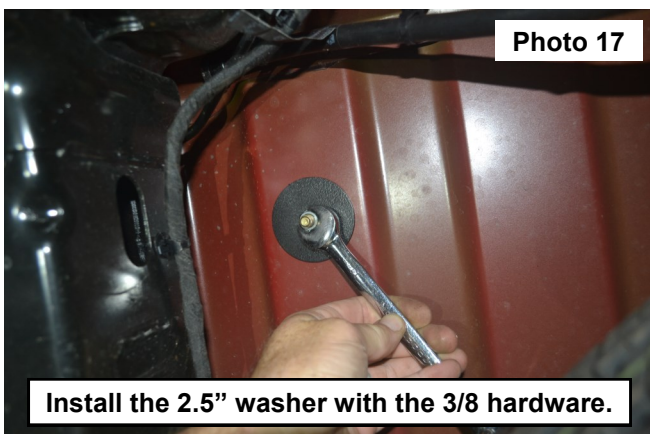


**NOTICE** bed floor. **See Photo 15.**

15. Remove the painters tape, clean the surface and any drilled shavings.
16. Install the tire carrier into the bed over the drilled holes. Secure the tire carrier using 4 of the supplied 3/8-16 x 1-1/4 hex head bolts (4) 3/8 flat washers. **See Photo 16.**
17. Install the 4 supplied 2.5" round washers under the bed onto the 3/8 bolts from the top with (4) 3/8 flat washers, (4)



- 3/8 lock washers and (4) 3/8-16 nuts. Torque to 35 ft-lbs. using a 9/16 wrench and socket. **See Photo 17.**
18. Install the wheel and tire onto the carrier secure using the supplied lug nuts. **See Photo 18.**



By purchasing any item sold by Rough Country, LLC, the buyer expressly warrants that he/she is in compliance with all applicable, State, and Local laws and regulations regarding the purchase, ownership, and use of the item. It shall be the buyers responsibility to comply with all Federal, State and Local laws governing the sales of any items listed, illustrated or sold. The buyer expressly agrees to indemnify and hold harmless Rough Country, LLC for all claims resulting directly or indirectly from the purchase, ownership, or use of the items.

