

ROUGH COUNTRY

SUSPENSION SYSTEMS®

TOYOTA 2024 Tacoma Hood Assist

Thank you for choosing Rough Country for your suspension needs.

Rough Country recommends a certified technician install this system. In addition to these instructions, professional knowledge of disassembly/reassembly procedures as well as post installation checks must be known. Attempts to install this system without this knowledge and expertise may jeopardize the integrity and/or operating safety of the vehicle.

Please read instructions before beginning installation. Check the kit hardware against the parts list on this page and the product layout on the last page. Be sure you have all needed parts and know where they go. Also please review tools needed list and make sure you have needed tools.

PRODUCT USE INFORMATION

▲WARNING As a general rule, the taller a vehicle is, the easier it will roll. Seat belts and shoulder harnesses should be worn at all times. Avoid situations where a side rollover may occur.

Generally, braking performance and capability are decreased when larger/heavier tires and wheels are used. Take this into consideration while driving. Do not add, alter, or fabricate any factory or after-market parts to increase vehicle height over the intended height of the Rough Country product purchased. Mixing component brands is not recommended.

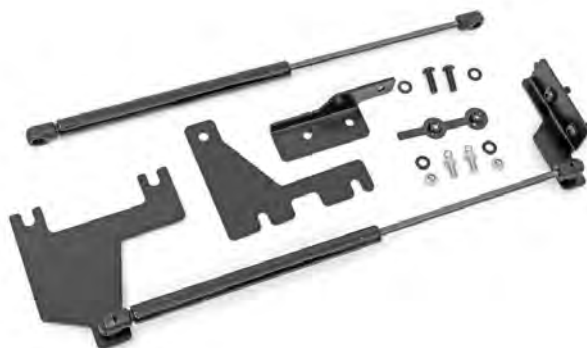
Rough Country makes no claims regarding lifting devices and excludes any and all implied claims. We will not be responsible for any product that is altered.

If questions exist we will be happy to answer any questions concerning the design, function, and correct use of our products.

▲NOTICE NOTICE TO DEALER AND VEHICLE OWNER

Any vehicle equipped with any Rough Country product should have a "Warning to Driver" decal installed on the inside of the windshield or on the vehicle's dash. The decal should act as a constant reminder for whoever is operating the vehicle of its unique handling characteristics.

INSTALLING DEALER - it is your responsibility to install the warning decal and forward these installation instructions on to the vehicle owner for review. These instructions should be kept in the vehicle for its service



Torque Specs:

Size	Grade 5	Grade 8	Size	Class 8.8	Class 10.9
5/16"	15 ft/lbs	20ft/lbs	6MM	5ft/lbs	9ft/lbs
3/8"	30 ft/lbs	35ft/lbs	8MM	18ft/lbs	23ft/lbs
7/16"	45 ft/lbs	60ft/lbs	10MM	32ft/lbs	45ft/lbs
1/2"	65 ft/lbs	90ft/lbs	12MM	55ft/lbs	75ft/lbs
9/16"	95 ft/lbs	130ft/lbs	14MM	85ft/lbs	120ft/lbs
5/8"	135ft/lbs	175ft/lbs	16MM	130ft/lbs	165ft/lbs
3/4"	185ft/lbs	280ft/lbs	18MM	170ft/lbs	240ft/lbs



KIT CONTENTS:

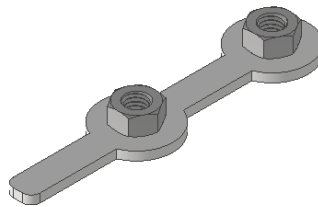
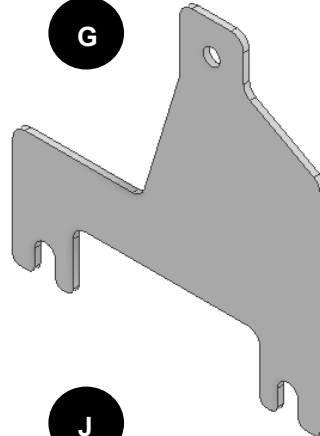
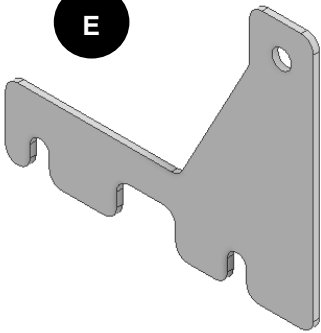
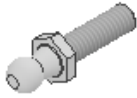
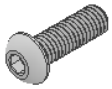
72108BAG1

- 4 - (A) 8mm x 25mm Button Head Bolt
- 4 - (B) 5/16" Ball Pin
- 4 - (C) 5/16" Lock Nut
- 8 - (D) 8mm Flat Washer

- (E) Dr. Fender Bracket
- (F) Dr. Hood Bracket
- (G) Pass. Fender Bracket
- (H) Pass. Hood Bracket
- 2 - (I) Flag Nut
- 2 - (J) Hood Assist Piston

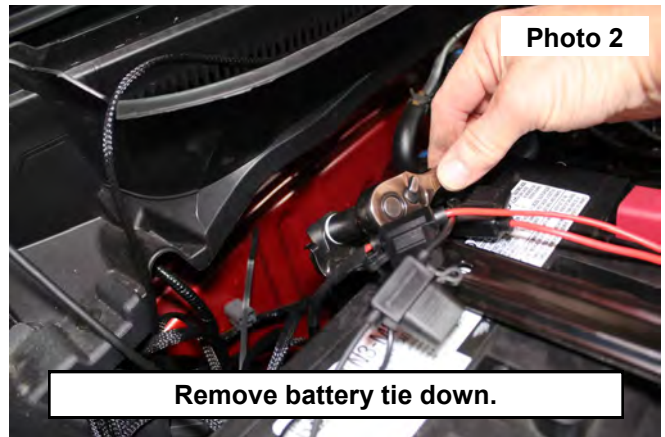
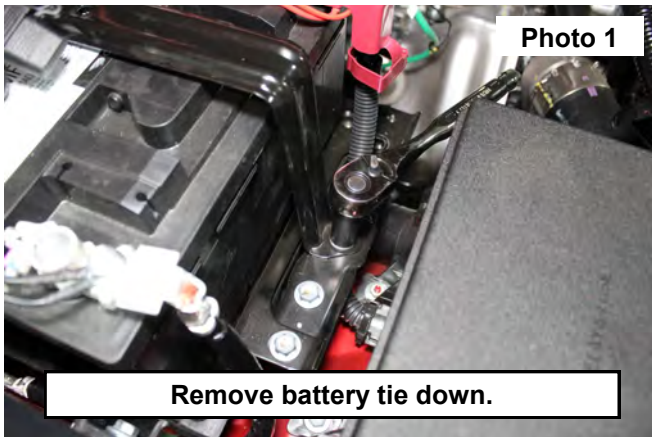
TOOLS REQUIRED:

- 5mm Allen Wrench
- 10mm Wrench or Socket
- 1/2" Wrench
- Ratchet Wrench
- Drill Motor
- 11/32" Drill

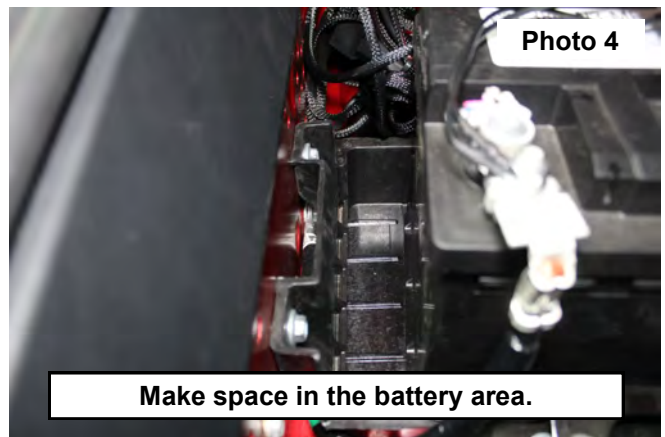
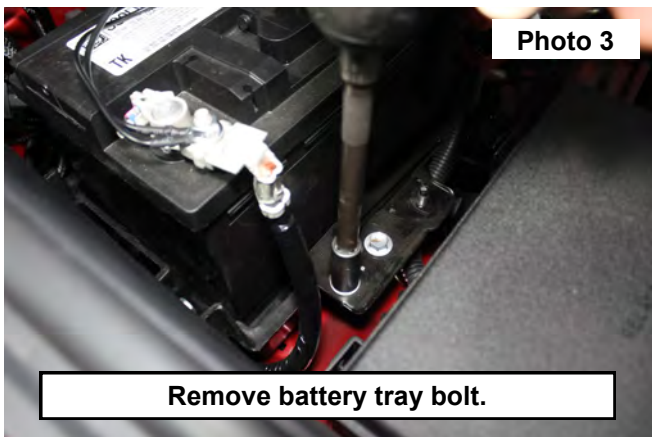


Installation Instructions

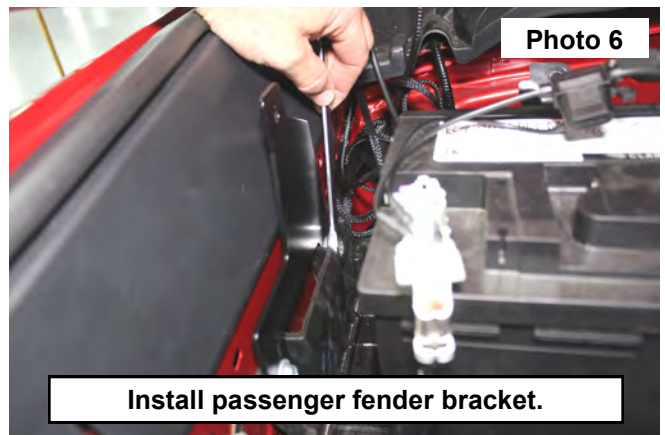
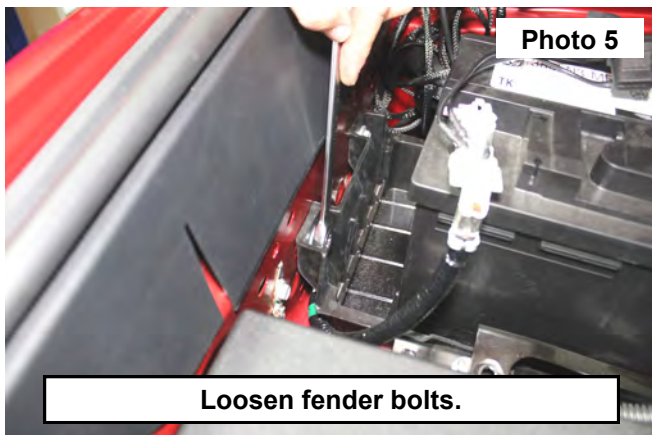
1. Pop the hood latch and raise the hood with the hood prop.
2. Remove the factory battery strap bolts using a 10mm wrench. Retain hardware for reuse. **See Photo 1 and Photo 2.**



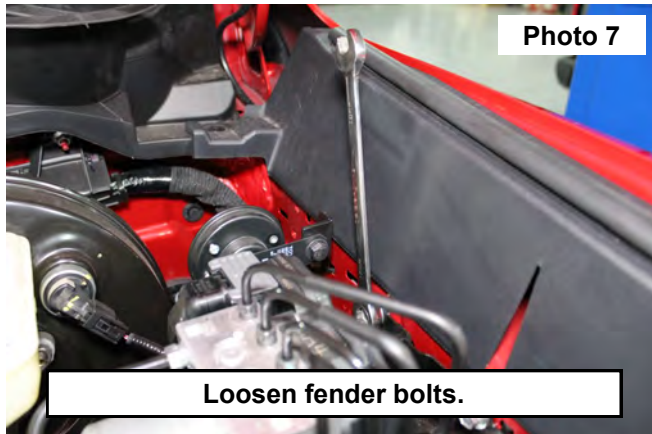
3. Remove battery tray bolt with a 10mm wrench. Retain hardware for reuse. **See Photo 3.**
4. Push the battery towards the engine slightly. **See Photo 4.**



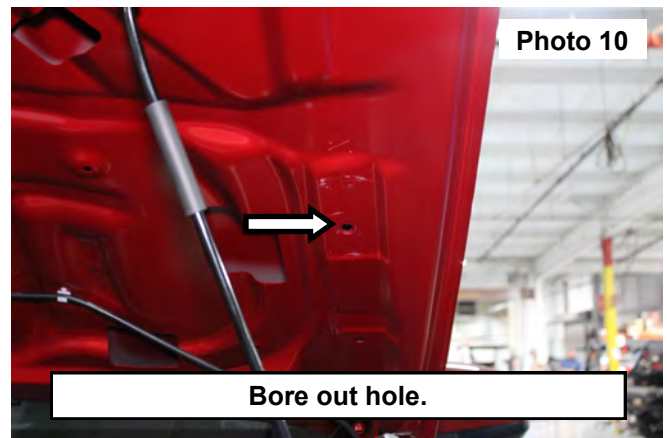
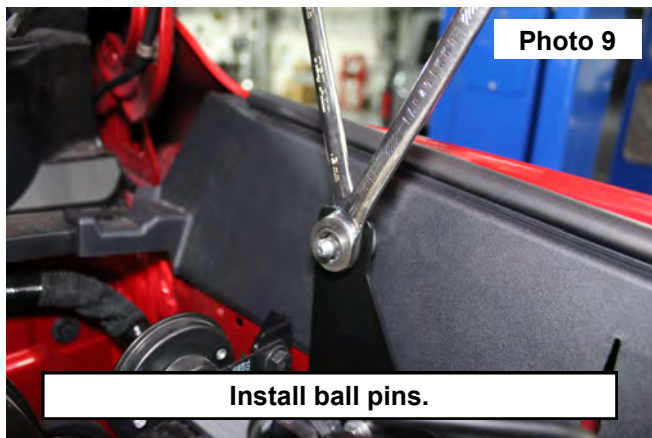
5. Loosen, but do not remove the two battery tray bolts in the fender using a 10mm wrench. **See Photo 5.**
6. Slide the passenger side fender bracket (G) behind the bolt and washer loosened in the previous step. Retighten factory hardware with a 10mm bolt. **See Photo 6.**
7. Once the passenger fender bracket is installed, reinstall the battery tray bolt and battery tie down bolts with a 10mm wrench.



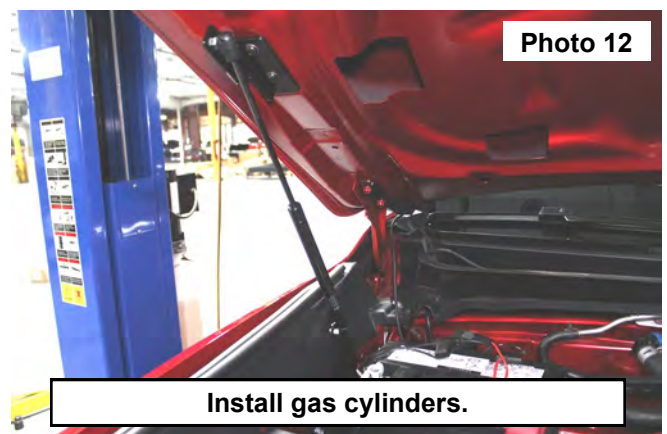
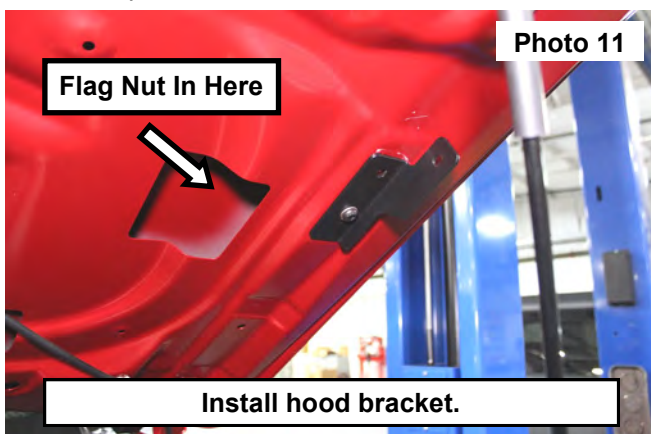
8. Loosen, but do not remove the two brake line distributor in the fender using a 10mm wrench. **See Photo 7.**
9. Slide the driver side fender bracket (E) behind the previously loosened bolts. Retighten the driver side fender bolts with a 10mm wrench. **See Photo 8.**



10. Insert the ball pin (B) into the hole of both fender brackets and secure it using the 5/16" lock nut (C). Tighten with two 1/2" wrenches. **See Photo 9.**
11. With an 11/32" drill, bore out the factory hole in the driver side of the hood. **See Photo 10.**



12. Place the dual flag nut (I) inside the hood using the large opening by the bored out hole. Install the driver side hood bracket (F) using the 8mm button head bolt (A), 8mm washer (D), and the previously installed flag nut. Tighten with a 5mm Allen wrench. **See Photo 11.**
13. Using the previously installed bracket as a template, use the 11/32" drill to make a hole in the hood where the other hole of the bracket is. Use the 8mm button head bolt, 8mm washer, and dual flag nut to finish securing the driver side hood bracket. Tighten with a 5mm Allen wrench.
14. Repeat for passenger side using the passenger side hood bracket (H).
15. Install the ball pins in the hood brackets using the 5/16" nuts. Tighten with two 1/2" wrenches.
16. Install the gas cylinders (J) by pulling the spring clips on the ends and sliding them over the ball pins. Snap the rings back in place to secure. **See Photo 12.**



POST INSTALLATION

1. Check and recheck all fasteners for proper torque. Check to ensure there is adequate clearance between all rotating, mobile, fixed and heated members. Check clearance between upper control arm and sidewall of tire for proper clearance. Check steering for interference and proper working order. Test brake system.
2. Re torque all fasteners after 500 miles. Visually inspect components and re torque fasteners during routine vehicle service.

MAINTENANCE INFORMATION

It is the ultimate buyers responsibility to have all bolts/nuts checked for tightness after the first 500 miles and then every 1000 miles. Wheel alignment steering system, suspension and driveline systems must be inspected by a qualified professional mechanic at least every 3000 miles.

Thank you for choosing Rough Country for your suspension needs.

By purchasing any item sold by Rough Country, LLC, the buyer expressly warrants that he/she is in compliance with all applicable , State, and Local laws and regulations regarding the purchase, ownership, and use of the item. It shall be the buyers responsibility to comply with all Federal, State and Local laws governing the sales of any items listed, illustrated or sold. The buyer expressly agrees to indemnify and hold harmless Rough Country, LLC for all claims resulting directly or indirectly from the purchase, ownership, or use of the items.

