



## TOYOTA 22-24 Hybrid I Force Max Converter Shield

Thank you for choosing Rough Country for all your vehicle needs.

Please read instructions before beginning installation. Check the kit hardware against the kit contents shown below. Be sure you have all needed parts and know where they go.

If question exist, please call us @1-800-222-7023. We will be happy to answer any questions concerning this product. Check all fasteners for proper torque. Check to ensure for adequate clearance between all components. Periodically check all hardware for tightness.

**Kit Contents:**  
Converter Shield x1

**Tools Needed:**  
14mm Wrench or Socket

**Hardware Included:**  
.375-16 x 1IN S B Torx Head x4  
Double Flag Nut x1  
Flag Nuts x2  
T40 Security Torx Bit x1  
T45 Security Torx Bit x1



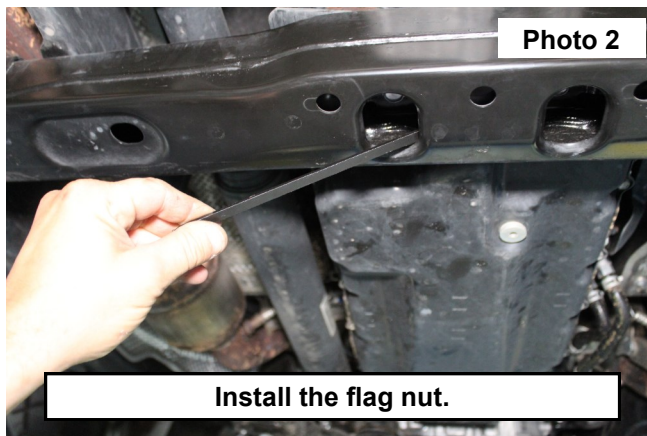
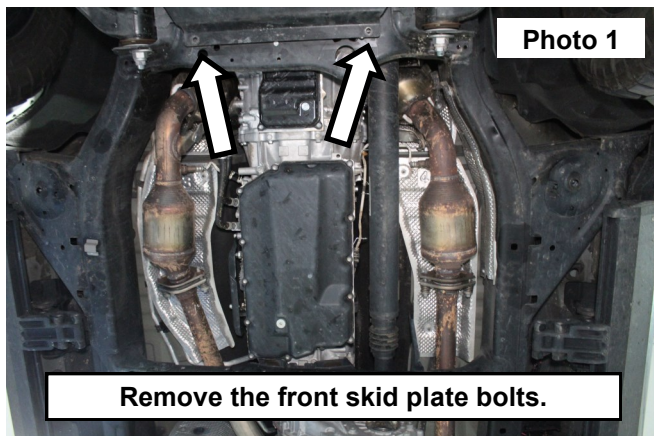
**Torque Specs:**

Size	Grade 5	Grade 8	Size	Class 8.8	Class 10.9
5/16"	15 ft/lbs	20ft/lbs	6MM	5ft/lbs	9ft/lbs
3/8"	30 ft/lbs	35ft/lbs	8MM	18ft/lbs	23ft/lbs
7/16"	45 ft/lbs	60ft/lbs	10MM	32ft/lbs	45ft/lbs
1/2"	65 ft/lbs	90ft/lbs	12MM	55ft/lbs	75ft/lbs
9/16"	95 ft/lbs	130ft/lbs	14MM	85ft/lbs	120ft/lbs
5/8"	135ft/lbs	175ft/lbs	16MM	130ft/lbs	165ft/lbs
3/4"	185ft/lbs	280ft/lbs	18MM	170ft/lbs	240ft/lbs

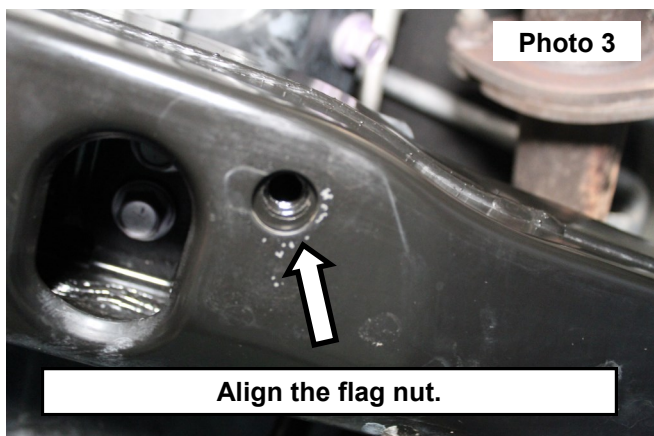


## INSTALLATION INSTRUCTIONS

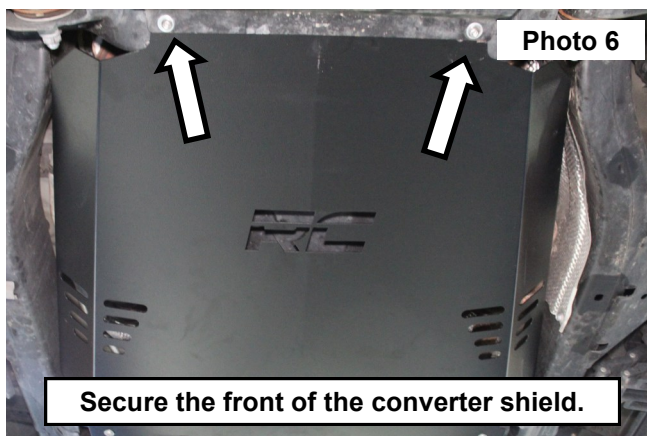
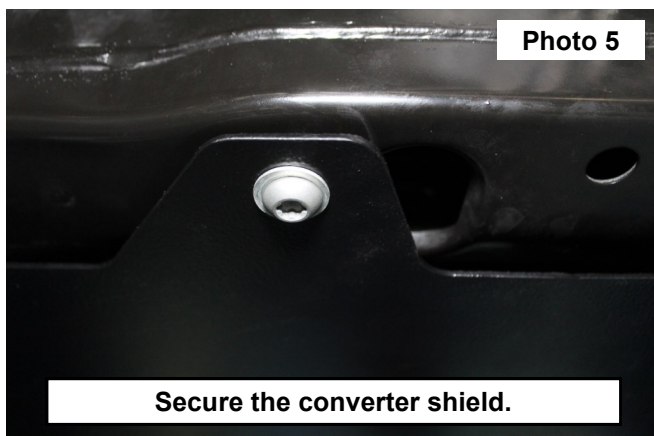
1. Remove the rear OE skid plate bolts using a 14mm Socket. **See Photo 1.**
2. Place the double flag nut into the transmission crossmember and align the nuts with the holes in the bottom. **See Photo 2 and 3.**



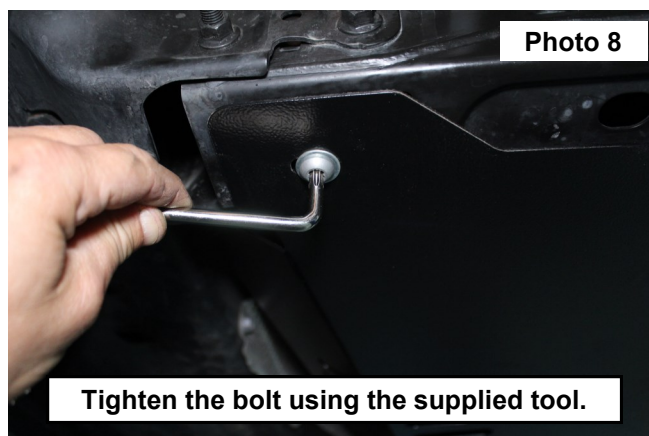
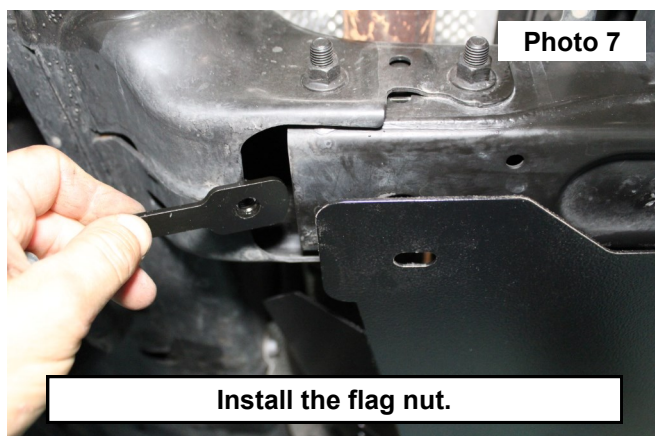
3. Place the new converter shield under the front skid plate. **See Photo 4.**



4. Secure the rear of the converter shield using (2) of the supplied security bolts. Snug them using the supplied tool. **See Photo 5.**
5. Secure the front of the converter shield using the retained OE bolts. **See Photo 6.**



6. Place the single flag nut into the crossmember and secure the converter shield using (1) of the supplied security bolts. Snug them using the supplied tool. **See Photos 7 and 8.**
7. Repeat step 6 on the opposite side of the converter shield.
8. Tighten the front and rear bolts. Retain the supplied tool for later maintenance.



By purchasing any item sold by Rough Country, LLC, the buyer expressly warrants that he/she is in compliance with all applicable, State, and Local laws and regulations regarding the purchase, ownership, and use of the item. It shall be the buyers responsibility to comply with all Federal, State and Local laws governing the sales of any items listed, illustrated or sold. The buyer expressly agrees to indemnify and hold harmless Rough Country, LLC for all claims resulting directly or indirectly from the purchase, ownership, or use of the items.

