

Can-Am 2016-20 Defender Rear Panel

Thank you for choosing Rough Country for all your vehicle needs.

Please read instructions before beginning installation. Check the kit hardware against the kit contents shown below. Be sure you have all needed parts and know where they go.

If question exist, please call us @1-800-222-7023. We will be happy to answer any questions concerning this product. Check all fasteners for proper torque. Check to ensure for adequate clearance between all components.

Periodically check all hardware for tightness.

Kit Contents:

Rear Panel x1
Seal x1
Knobs x3
Upper Brackets x3
Lower Brackets x2

Tools Needed:

Rear Panel x1
Seal x1
Plastic Retainer Pins x8
Straps x2

Hardware:

1/4" x 5/8" Button Head Bolts x4
1/4" x 1-1/2" Button Head Bolts x3
1/4" Flat Washers x10
1/4" Lock Nuts x7
5/16" Nylon Spacers x3



Torque Specs:

Size	Grade 5	Grade 8	Size	Class 8.8	Class 10.9
5/16"	15 ft/lbs	20ft/lbs	6MM	5ft/lbs	9ft/lbs
3/8"	30 ft/lbs	35ft/lbs	8MM	18ft/lbs	23ft/lbs
7/16"	45 ft/lbs	60ft/lbs	10MM	32ft/lbs	45ft/lbs
1/2"	65 ft/lbs	90ft/lbs	12MM	55ft/lbs	75ft/lbs
9/16"	95 ft/lbs	130ft/lbs	14MM	85ft/lbs	120ft/lbs
5/8"	135ft/lbs	175ft/lbs	16MM	130ft/lbs	165ft/lbs
3/4"	185ft/lbs	280ft/lbs	18MM	170ft/lbs	240ft/lbs

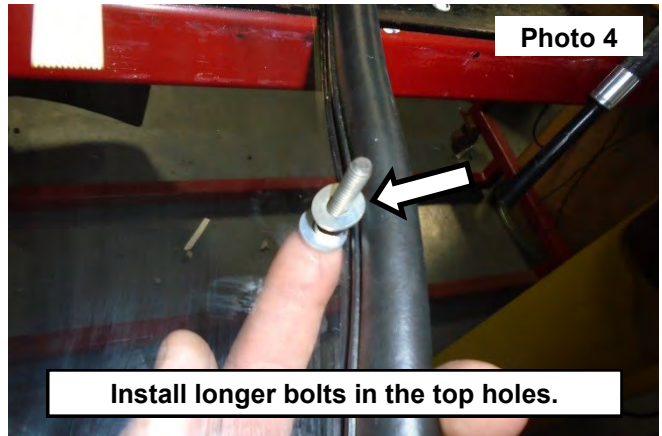
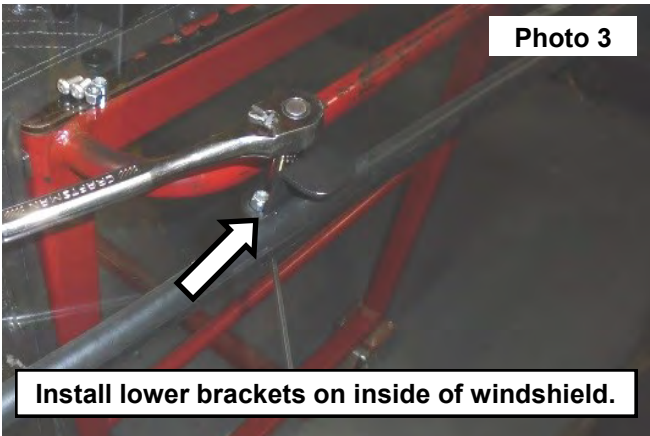


INSTALLATION INSTRUCTONS

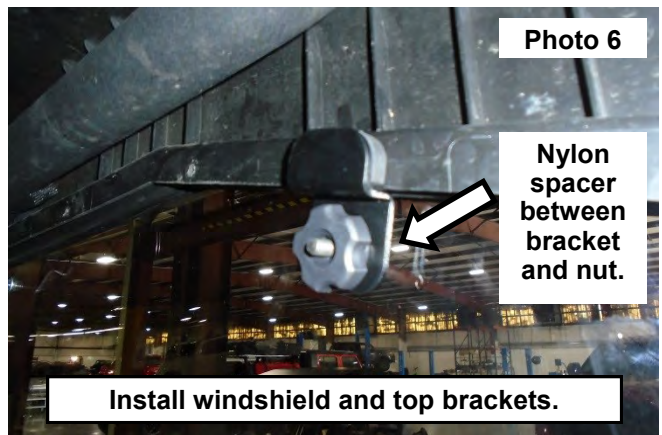
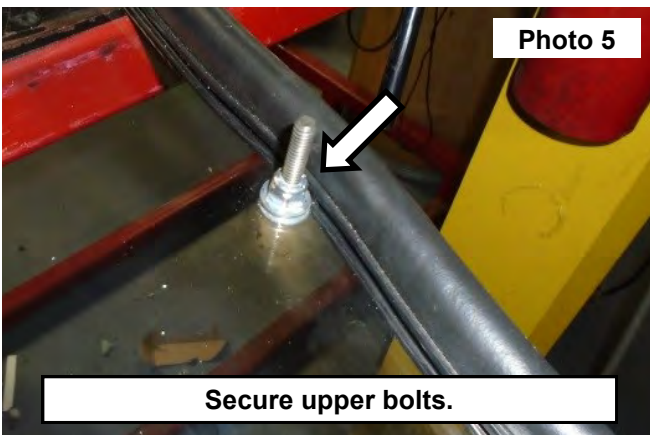
1. Clean the surface of the UTV that the windshield will be applied to. **See Photo 1.**
2. Place the rubber seal around the window panel. Make sure the seal is firmly seated. **See Photo 2.**



3. Install the lower brackets on the inside of the windshield with the supplied 1/4" x 5/8" button head bolts, nuts, and flat washers using a 5/32" Allen wrench and 3/8" socket/wrench. **See Photo 3.**
4. Install the supplied 1/4" x 1-1/2" button head bolts, and flat washers (install a flat washer on each side of the windshield) in the top holes. **See Photo 4.**



5. Secure the bolts using the supplied 1/4" lock nuts and 3/8" wrench. **See Photo 5.**
6. Place the windshield to the vehicle and install the 5/16" nylon spacers over the bolts and install the top brackets using the knobs. **See Photo 6.**



By purchasing any item sold by Rough Country, LLC, the buyer expressly warrants that he/she is in compliance with all applicable, State, and Local laws and regulations regarding the purchase, ownership, and use of the item. It shall be the buyers responsibility to comply with all Federal, State and Local laws governing the sales of any items listed, illustrated or sold. The buyer expressly agrees to indemnify and hold harmless Rough Country, LLC for all claims resulting directly or indirectly from the purchase, ownership, or use of the items.

