

ROUGH COUNTRY

SUSPENSION SYSTEMS®



WARNING: This product contains a chemical known to the State of California to cause Cancer and Reproductive Harm. For more information, go to www.P65Warnings.ca.gov.

2024 FORD RANGER CREW CAB 2WD/4WD TRADITIONAL STYLE FLARES

PRIOR TO INSTALLATION

- A) Install the flares according to these written instructions with the hardware provided. **WARNING:** Failure to install according to these instructions will invalidate the warranty. This includes, but is not limited to, using alternative installation methods, hardware, or materials. **DO NOT USE:** Loctite, Superglue, or similar products on the hardware or the flares. *Install flares on cleaned vehicle surfaces.*
- B) **Fit:** Verify the fit of the flares to vehicle prior to installation (some filing, sanding, or cutting may be necessary to ensure proper fit).
- C) **Painting:** (Optional) if paint is desired it must be done prior to installing flares on vehicle. Clean outer surface with a good grade degreaser. **DO NOT USE LACQUER THINNER OR ENAMEL REDUCER AS A DEGREASER.** Wipe outer surface thoroughly with a tack rag prior to paint. Application of plastic adhesion promoter for ABS plastic as per your paint system manufacturer's recommendations is required. Paint flares using a high-quality enamel, or polyurethane automotive paint. If painting edge trim (not recommended), use a flex additive.
- D) **Performance:** Using larger tires may increase the area required to turn the vehicle. Some tire/rim combinations may require lowering bump stops and or installing steering stops to prevent tire from contacting flare.
- E) **Exhaust System:** Modifications may be necessary to maintain a minimum 4" clearance between flares and exhaust pipes. (Exhaust gases should not vent directly onto flares)
- F) **Metal Protection:** All exposed fasteners and bare metal should be treated with rust resistant paint **BEFORE** installing flares. Spray inner fender wells with undercoating **AFTER** flare attachments have been completed.
- G) **Decals:** Flares may interfere with existing decals on vehicle. If you wish, remove decals prior to installation of flares.
- H) **Care & Cleaning:** Fender flares are built to last; any detergent you use to wash your vehicle is sufficient to clean the flare. Do not use any harsh abrasive detergents.

TOOLS FOR EASY INSTALLATION:

- Soft Cloth or Alcohol Wipe
- Socket Wrench
- 10mm Socket
- T-20 Torx Bit
- #2 Philips Screwdriver
- Pry Tool
- Awl
- Utility Knife

PLEASE READ: Dirt and debris can become lodged between the fender flares and the vehicle's fenders, causing scratching and paint wear from vibration. Manufacturer is not responsible for any damage, and the installation of our fender flares is done with the buyer's understanding that this scratching and paint wear may occur.

LIMITED LIFETIME WARRANTY AGAINST ANY MANUFACTURING DEFECTS: To claim warranty you must provide Proof of Purchase.

INCLUDED IN HARDWARE KIT:

1.



Push-In Pocket Hardware, Brushed Metal
44 pcs

2.



Push-In Pocket Hardware, Black
44 pcs

3.



Small Christmas Tree Fastener
14 pcs

4.



Large Christmas Tree Fastener
4 pcs

5.



Plastic Push-Lock Retainer
6 pcs

6.



Wiper Style Edge Trim
334 inches



IF YOU PURCHASED GLOSSY BLACK FLARES (CODE "RCGB"):



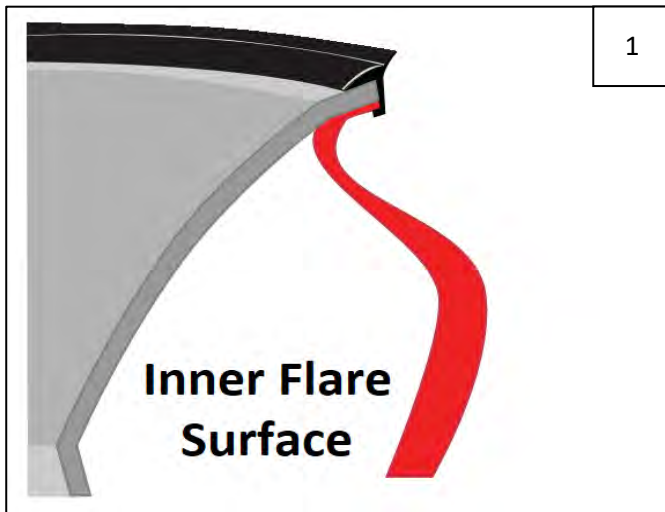
Prior to beginning installation process, peel the protective liner from each plastic piece included in the flare kit – all flares and inner pieces.

NOTE: It will be difficult to remove liner once edge trim and hardware are installed.

Once liner is removed, take care not to scratch flare surfaces. If flare needs to be cleaned, wipe gently with a clean, soft cloth.



SECTION 1: EDGE TRIM INSTALLATION



Peel 2-3 inches of red vinyl backing away from supplied edge trim tape. Applying the adhesive side of the edge trim to the inner side of the flare, affix the edge trim to the top edge of the flare (the portion that comes in contact with the side of the vehicle).

Press edge trim into place along the top edge of the flare in one-foot increments, pulling red vinyl backing free as you continue to work your way around the top edge of the flare. Trim edge trim flush with ends of flare.

SECTION 2: PUSH-IN POCKET HARDWARE INSTALLATION



Peel liner from tape on Push-In Pocket Hardware (brushed metal or black as preferred). NOTE: There will be extra Push-In Pocket Hardware.



Insert Push-In Pocket Hardware into each flare pocket hole (on outer flare surface – 8 places on each front flare, 7 on the driver rear, 8 on the passenger rear). Push in to engage clip and tape adhesion.

SECTION 3: FRONT FLARE INSTALLATION



Using a Phillips screwdriver, loosen 6 factory fasteners. Use a pry tool to remove fasteners fully.



Using a pry tool, remove 4 factory fasteners located at front of wheel well. Retain 2 of these fasteners for reinstallation.



Use a T-20 Torx bit to remove 1 factory fastener from underside of factory flare at front end. Retain.



Remove and discard rear trim.



Pull factory flare away from vehicle body at front to expose marker light wiring. Do not remove flare entirely.



Disengage marker light from factory flare from behind flare.



10

Disconnect the wire harness from the marker light. Remove the marker light and keep for installation in purchased flare.



11

Reinstall 2 factory fasteners removed in Step 5 through holes indicated by arrows to refasten the factory flare. The other two holes will be utilized by the purchased flare.



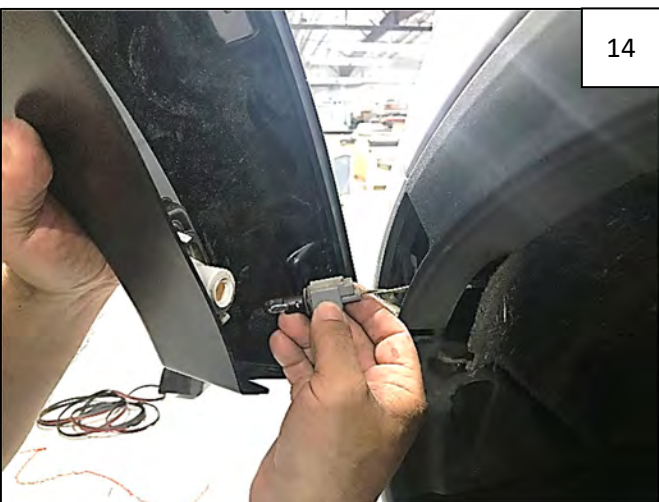
12

Reinstall 2 T-20 Torx screws removed in Step 6.



13

Install marker light in purchased flare, pressing firmly on either end to engage marker light clips in trim pocket of flare.



14

Hold flare on fender (it fits over factory flare) and reconnect the bulb/wire harness to the marker light.



15

Holding flare firmly on fender, install four supplied Small Christmas Tree Fasteners through holes indicated by arrows.



16

Install one supplied Plastic Push-Lock Retainer through one hole indicated by arrow.



17

Install 2 supplied Large Christmas Tree Fasteners at front of flare.



18

Completed Front Flare Installation.

SECTION 4: REAR FLARE INSTALLATION



Using a Phillips screwdriver, loosen 2 factory fasteners from front mud guard. Use a pry tool to remove fasteners fully.



Using the screwdriver and pry tool, remove the two factory fasteners from the underside of the adjacent corner trim.



Use a 10mm socket to remove the bolt at the underside of the front mud guard. Remove and discard mud guard, but reinstall bolt.



The corner trim is taped on; grasp the edge and peel away from vehicle surface. Discard.



Using a Phillips screwdriver, loosen 3 factory fasteners in wheel well. Use a pry tool to remove fasteners fully.

NOTE: Some fasteners will remain in place and should not be removed.



Using the screwdriver and pry tool, remove the lowest factory fastener at the rear of the wheel well.



25

Use a T-20 Torx bit to remove 1 factory fastener indicated by arrow. Retain this fastener.



26

Holding flare firmly on fender, install three supplied Small Christmas Tree Fasteners through holes indicated by arrows.



27

Install 2 supplied Plastic Push-Lock Retainers through holes indicated by arrows.



28

Reinstall the factory T-20 fastener.



29

Completed Rear Flare Installation

