

ROUGH COUNTRY

SUSPENSION SYSTEMS®

921SRB091785A

RAM 09-18 1500 / 10-23 2500 CREW CAB HD2 STEP

Thank you for choosing Rough Country for all your vehicle needs.

Please read instructions before beginning installation. Check the kit hardware against the kit contents shown below. Be sure you have all needed parts and know where they go.

If question exist, please call us @1-800-222-7023. We will be happy to answer any questions concerning this product.

Check all fasteners for proper torque. Check to ensure for adequate clearance between all components.

Periodically check all hardware for tightness.

KIT CONTENTS:

Step Rails x2
 Dr. Step Bracket x2
 Pass. Step Bracket x2
 Dr. Rear Bracket x1
 Pass. Rear Bracket x1
 Dr. Step Brace x2
 Pass. Step Brace x2
 Dr. Rear Brace x1
 Pass. Rear Brace x1
 Front End Cap x2
 Rear End Cap x2
 Tread Plate x4

TOOLS NEEDED:

10mm Wrench or Socket
 13mm Wrench or Socket

HARDWARE INCLUDED:

18 - 8mm x 25mm Bolt
 24 - 8mm Oversize Washer
 12 - 8mm Lock Washer
 6 - Ram Bolt Plate
 24 - 6mm x 20mm Bolt
 12 - 8mm Lock Nut
 6 - Plastic Retainer
 36 - 6mm Flat Washer
 24 - 6mm Lock Nut
 8 - 6mm Lock Washer
 8 - 6mm x 15mm Button Head Bolt
 8 - 6mm Nut
 24 - 8mm Self Threading Nut



Torque Specs:

Size	Grade 5	Grade 8	Size	Class 8.8	Class 10.9
5/16"	15 ft/lbs	20ft/lbs	6MM	5ft/lbs	9ft/lbs
3/8"	30 ft/lbs	35ft/lbs	8MM	18ft/lbs	23ft/lbs
7/16"	45 ft/lbs	60ft/lbs	10MM	32ft/lbs	45ft/lbs
1/2"	65 ft/lbs	90ft/lbs	12MM	55ft/lbs	75ft/lbs
9/16"	95 ft/lbs	130ft/lbs	14MM	85ft/lbs	120ft/lbs
5/8"	135ft/lbs	175ft/lbs	16MM	130ft/lbs	165ft/lbs
3/4"	185ft/lbs	280ft/lbs	18MM	170ft/lbs	240ft/lbs



Dr. Front/Middle Bracket



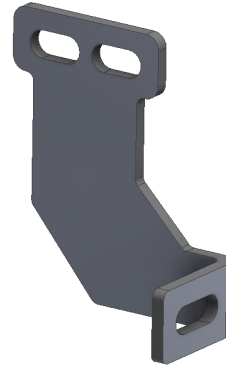
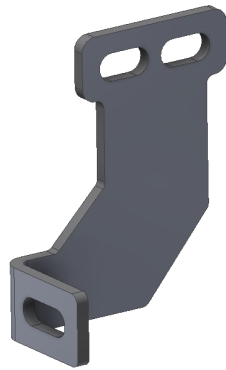
Pass. Front/Middle Bracket



Dr. Rear Bracket



Pass. Rear Bracket



Dr. Front/Middle Brace

Pass. Front/Middle Brace

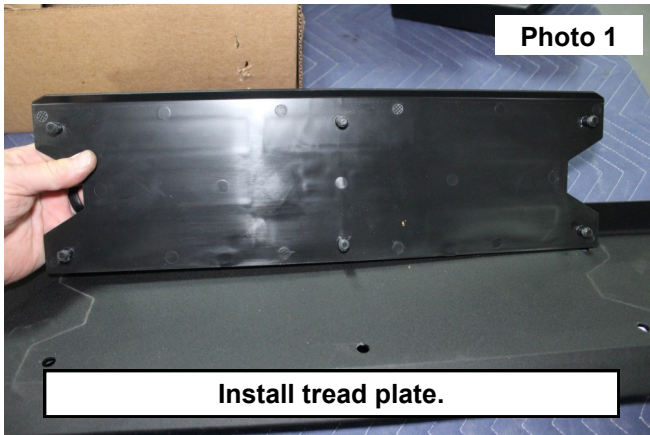


Dr. Rear Brace

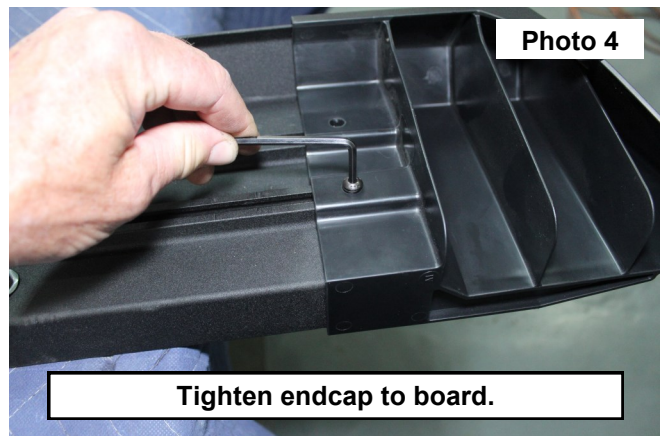
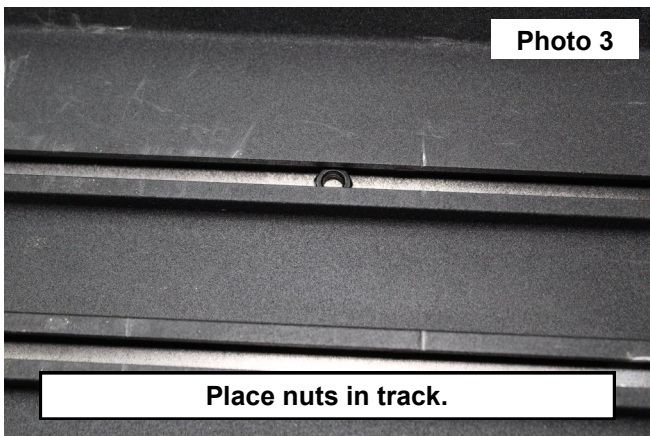
Pass. Rear Brace

HD2 BOARD ASSEMBLY

1. Place molded tread plate onto the running board by aligning the pegs with the holes in the step board. **See Photo 1.**
2. Secure the tread plate to the step board with the supplied self-threading nut using a 13mm socket. **See Photo 2.**



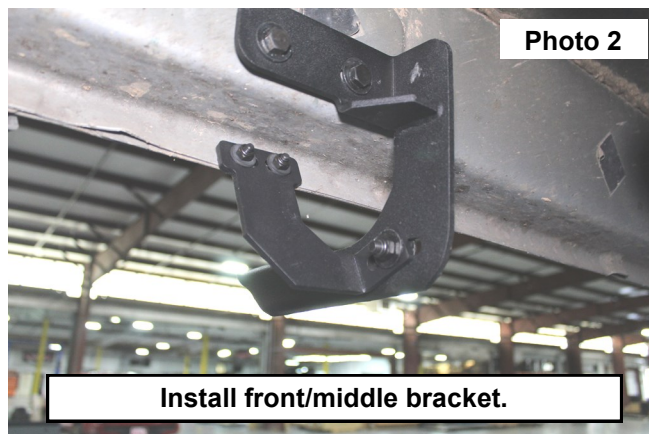
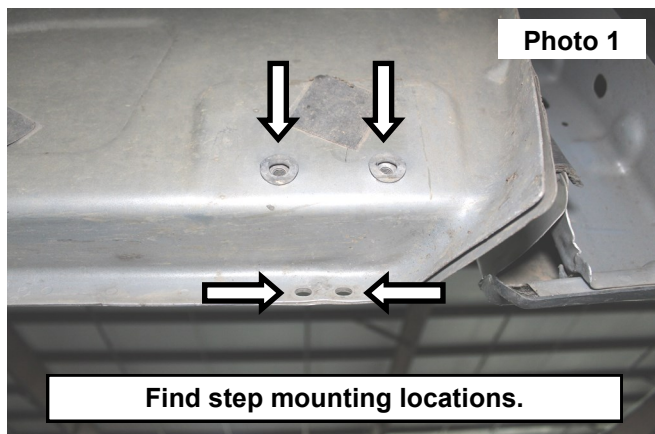
3. Place (1) supplied 6mm x 20mm bolt in each track for each bracket on one side of the vehicle.
4. Place (2) 6mm finish nuts into the track on the underside of the step board. **See Photo 3.**
5. Use (2) supplied 6mm lock washers and button head bolts to secure the endcap to the step board. Tighten with a 4mm Allen wrench. **See Photo 4.**



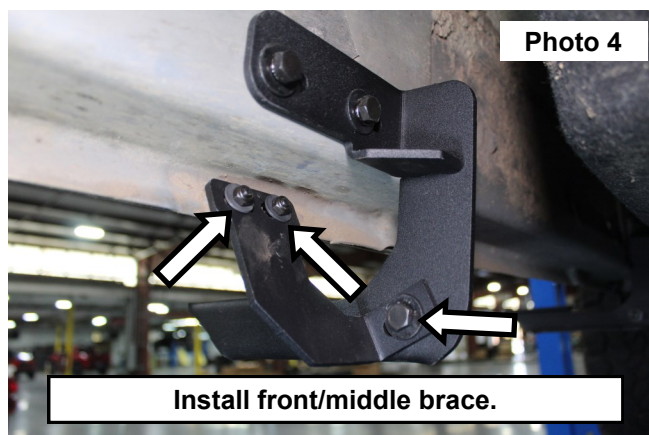
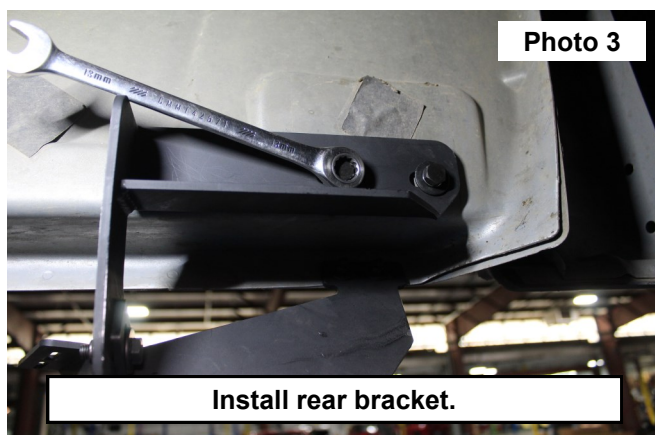
6. Repeat Step 4 to install the other end cap.
7. Repeat Step 1 through Step 6 for other side of vehicle.

INSTALLATION INSTRUCTONS

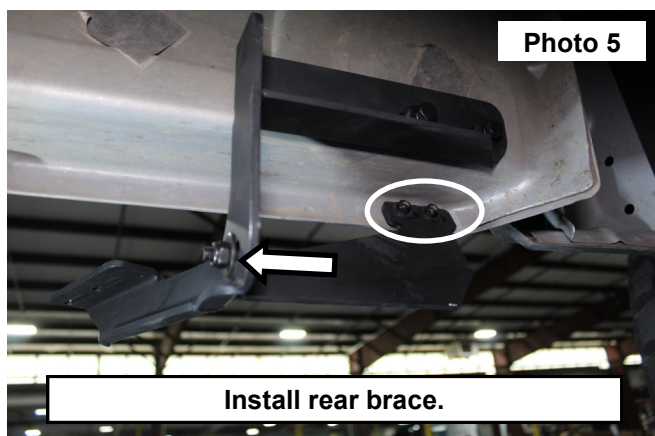
1. Locate the step mounting holes in the rocker panel of the vehicle. **See Photo 1.**
2. **NOTE:** Some models will not have threaded inserts in the rocker panel. If this is the case, use the supplied Ram Bolt Plates in the vehicle mounting locations and use the supplied plastic retainers to hold them in plate.
3. Mount the brackets to the rocker panel using either the (2) 8mm bolts, (2) oversize washers, and (2) lock washers (models with threaded inserts) or (2) 8mm lock nuts (models using the bolt plate). Tighten with a 13mm wrench. **See Photo 2 and Photo 3.**



4. Install the braces into the pinch weld using supplied (2) 6mm bolts, (2) washers, and (2) lock nuts. Tighten with a 10mm wrench. Connect the brace to the bracket using an 8mm bolt, (2) oversize washers, lock washer and nut. Tighten with two 13mm wrenches. **See Photo 4 and Photo 5.**



5. Align the bolts in the track of the assembled step boards with the slots of the brackets. Use the supplied 6mm washer and lock nut to secure. Use a 10mm wrench to tighten. **See Photo 6.**



By purchasing any item sold by Rough Country, LLC, the buyer expressly warrants that he/she is in compliance with all applicable, State, and Local laws and regulations regarding the purchase, ownership, and use of the item. It shall be the buyers responsibility to comply with all Federal, State and Local laws governing the sales of any items listed, illustrated or sold. The buyer expressly agrees to indemnify and hold harmless Rough Country, LLC for all claims resulting directly or indirectly from the purchase, ownership, or use of the items.

