



baja designs
The Scientists of Lighting

**Polaris RZR XP 1000, XP Turbo, Turbo S (All Years)
RTL & RTLS Kit Instructions**

44-7815, 44-7816, 44-7818, 44-7819

44-7811, 44-7812, 44-7813, 44-7814



185 Bosstick Boulevard • San Marcos • CA • 92069

Phone 760-560-2252 • Fax 760-560-0383

info@bajadesigns.com • www.bajadesigns.com



baja designs[®]
The Scientists of Lighting

LIMITED LIFETIME WARRANTY

Baja Designs proudly offers a LIFETIME WARRANTY against manufacturer's defect on all the products that we manufacture.

These are comprehensive warranties; other than the exclusions below – you're covered. If your LED or HID bulb burns out, you're covered. Additionally, cutting off our connector or changing your lenses does not automatically void your warranty.

Exclusions:

Installation errors, abuse, misuse or crash damage. You must be the original owner of the product and can supply proof of purchase.

Baja Designs manufactures its own products as well as resells products manufactured by others. Baja Designs makes no express or implied warranties on products not manufactured by Baja Designs including without limitation any warranties or merchantability and fitness for a purpose. We will, however, pass on all warranties made by the manufacturer, who has sole responsibility for performing such warranties.

Baja Designs will pay the freight if your product is less than 90 days old, otherwise defective products must be returned to Baja Designs, Inc., freight prepaid. At our option, we will repair or replace items in question and return them at no charge. If the identical product is no longer available, we will replace with a similar product of equal value. Baja Designs Inc. will not be responsible for any indirect or consequential damages in connection with defective merchandise.

Items purchased through a Baja Designs authorized dealer must be returned through the dealer. Only available on LED auxiliary lights and product must be in sellable condition at MSRP. Product that has been damaged in any way after the original purchase date will be excluded from this guarantee.

Indemnification:

Buyer hereby acknowledges off-roading, racing and driving at night are dangerous activities and that the products and/or supplies purchased from Baja Designs are used in an inherently dangerous activity that may endanger life and limb; and in no event shall the seller, or seller's heirs and assigns, be held liable for consequential damages, nor shall seller's liability on any claim for damages arising out of or connected with the sale, delivery, or use of purchased products and/or supplies exceed the purchase price of the products and/or supplies

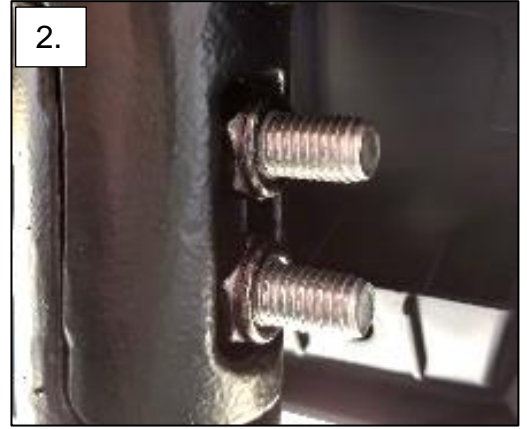
Tools Required

- 7/16", 15mm, 17mm
- Flat head & Phillips screw driver
- T20 Torx bit

1. Steps 1-4 are for 4 seat model.

2. Using a 15mm socket, remove the factory cage bolts. Only remove one side at a time so the cage does not shift position.

3. Replace the factory bolts with the two longer supplied bolts. Using the 15mm socket tighten down the cage with the extra thread facing the inside of the car.



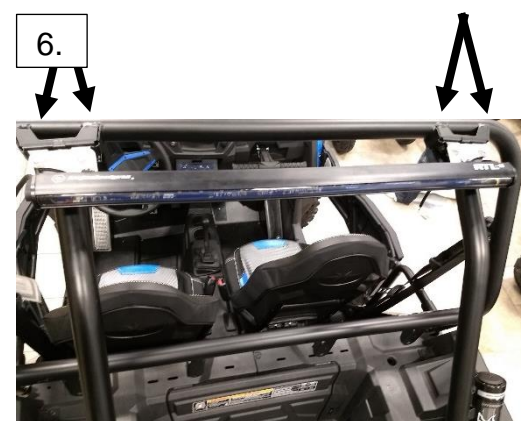
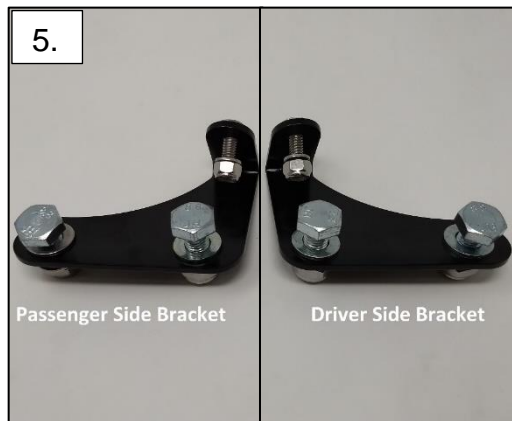
3. Place the bracket over the extra thread from the cage bolt.

4. Using a 17mm socket, tighten down the bracket with the supplied nuts.



5. *For 2 seat models only. Have the hardware and brackets as shown.

6. *For 2 seat models only. Using the existing holes shown on the cage joint where the C-pillar meets the A-pillar. Bolt down the brackets with the 4 supplied bolts using a 17mm socket and wrench.



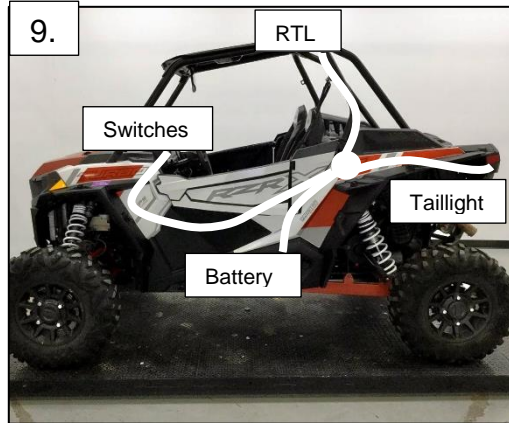
7. Slide the 2x 1/4"-20 bolts into the channel on the back of the lightbar. Place the light bar with the bolts onto the brackets. Placing a washer and a nut onto the 1/4"-20 bolts.



8. Center the light to the vehicle. Using a 7/16" socket, tighten down the light.



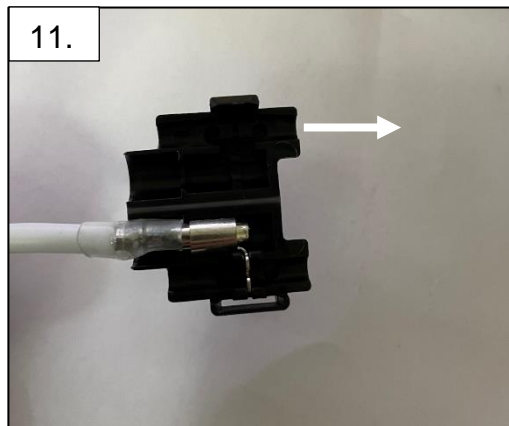
9. Run the RTL leads to the light bar. Run the battery leads to the battery under the driver side seat. (driver side, back seat for 4 seat model) Run the taillight splice leads to the driver side rear taillight.



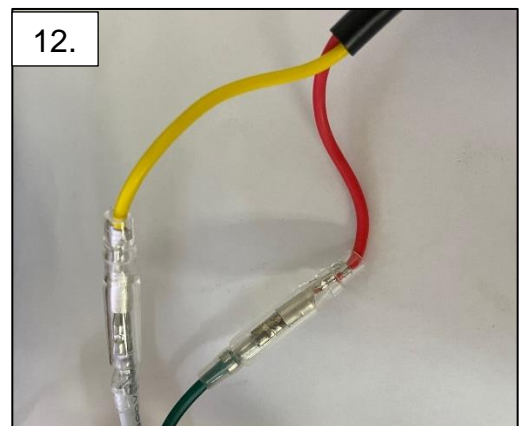
10. Plug in the splice adapter harness on the back of the driver side taillight.



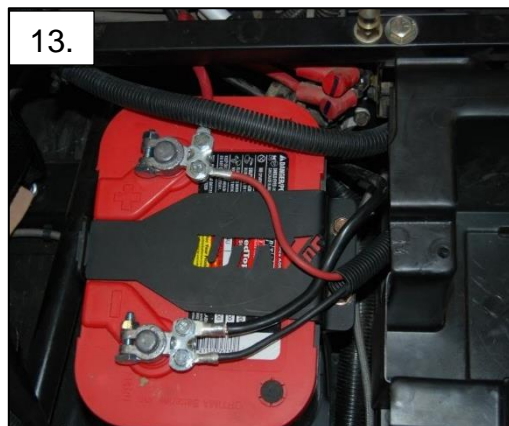
11. Remove the plastic splice connector housing from the bullet connector on both taillight leads.



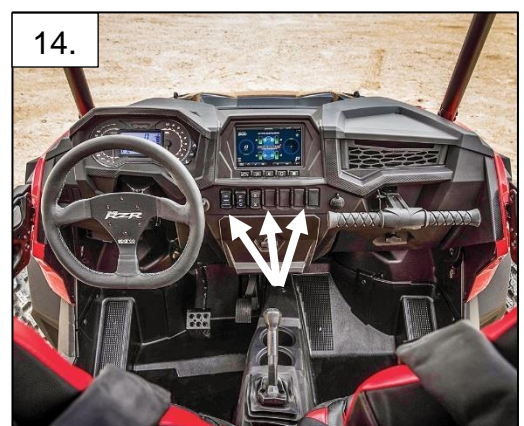
12. Connect the taillight leads to the splice adapter harness. Yellow to Yellow & Red to Red.



13. Using a 10mm socket, remove the battery leads and apply the ring terminals.



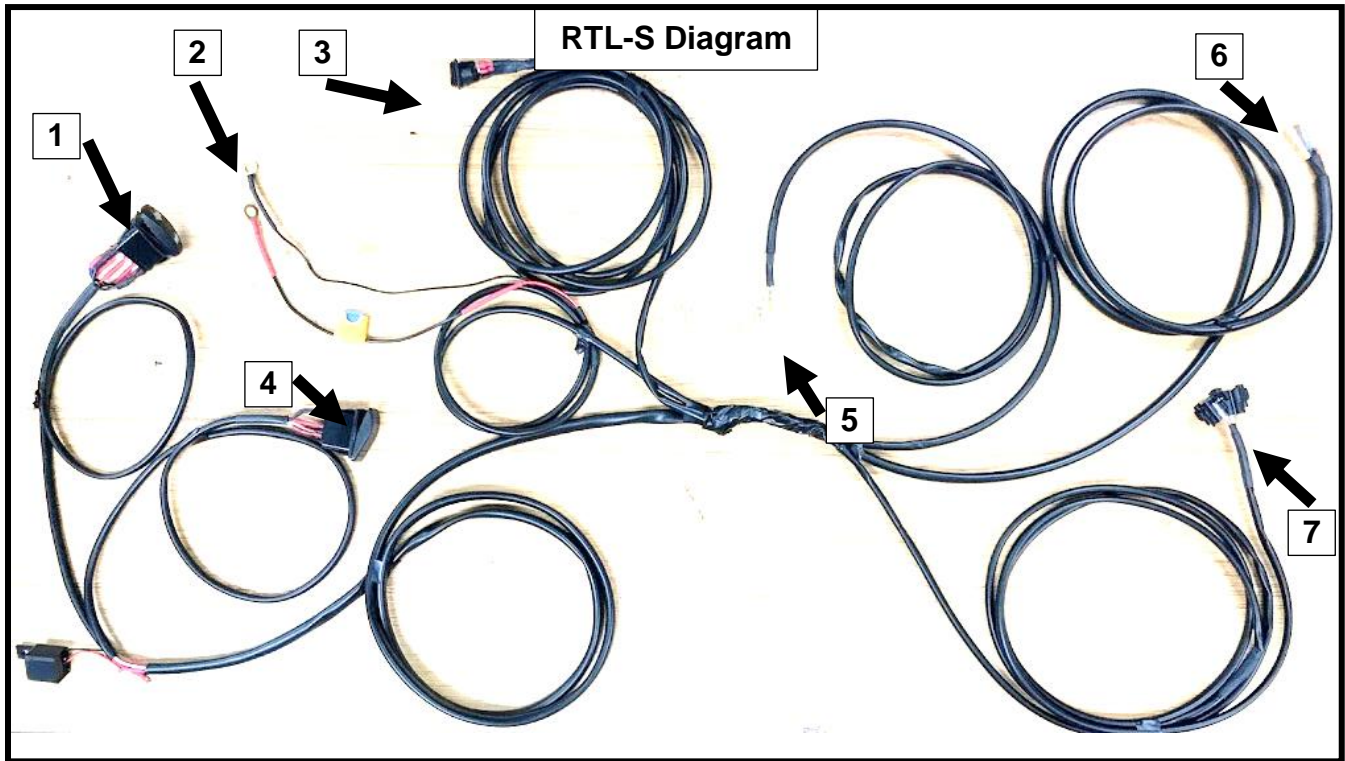
14. Route the switch lead under the drive shaft plastic cover. Place the switch in one of the factory switch locations.



Tie all wires away from sharp, hot, and/or rotating components.

Re-torque all the fasteners after 100 miles.

Your install is now complete! Thank you for choosing Baja Designs.



RTL-S Diagram

I. Turn signal rocker switch

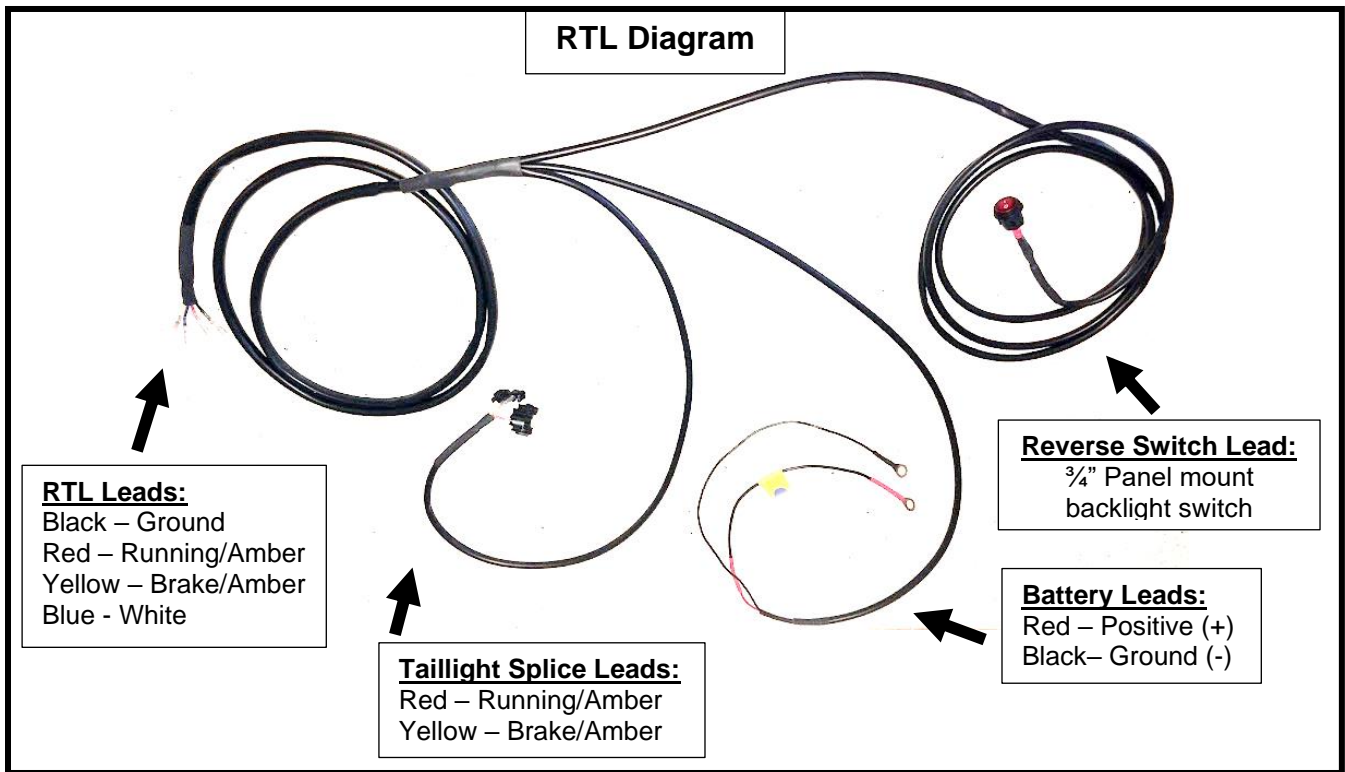
II. Reverse Switch:
3/4" Panel mount backlight switch

V. RTL Leads:
Black – Ground
Red – Running
Yellow – Brake
Blue - White

VII. Taillight Splice Leads:
Red – Running/Amber
Yellow – Brake/Amber

II. Battery Leads:
Red – Positive (+)
Black – Ground (-)

IV. Dust Light Switch:
21mm x 37mm



RTL Diagram

RTL Leads:
Black – Ground
Red – Running/Amber
Yellow – Brake/Amber
Blue - White

Reverse Switch Lead:
3/4" Panel mount backlight switch

Battery Leads:
Red – Positive (+)
Black – Ground (-)

Taillight Splice Leads:
Red – Running/Amber
Yellow – Brake/Amber