



FITTING INSTRUCTIONS

Part Number(s): **3280010 & 3280020**
Product Description: **NON-WINCH BAR SUIT BRONCO**
Suited to vehicle/s: **2021 FORD BRONCO**
Optional Accessory: **3580010 LED FOG LAMP KIT (FOR VEHICLES WITHOUT FACTORY-FITTED FOG LIGHTS).**

WARNING

NOTE THE FOLLOWING:

- ◆ This product must be installed exactly as per these instructions using only the hardware supplied.
- ◆ In the event of damage to any component, contact your nearest authorised ARB stockist. Repairs or modifications to the impact absorption system must not be attempted.
- ◆ Do not use this product for any vehicle make or model, other than those specified by ARB.
- ◆ Do not remove labels from this bull bar.
- ◆ This product or its fixing must not be modified in any way.
- ◆ The installation of this product may require the use of specialized tools and/or techniques.
- ◆ It is recommended that this product is only installed by trained personnel.
- ◆ These instructions are correct as at the publication date. ARB Corporation Ltd. cannot be held responsible for the impact of any changes subsequently made by the vehicle manufacturer.
- ◆ During installation, it is the duty of the installer to check correct operation/clearances of all components.
- ◆ Work safely at all times.
- ◆ Unless otherwise instructed, tighten fasteners to specified torque.

ARB 4x4 ACCESSORIES

Corporate Head Office

42-44 Garden St
Kilsyth, Victoria
AUSTRALIA 3137

Tel: +61 (3) 9761 6622
Fax: +61 (3) 9761 6807

Australian enquiries
North & South American enquiries
Other international enquiries

sales@arb.com.au
sales@arbusa.com
exports@arb.com.au

www.arb.com.au

GENERAL CARE AND MAINTENANCE

By choosing an ARB Bar, you have bought a product that is one of the most sought after 4WD products in the world. Your bar is a properly engineered, reliable, quality accessory that represents excellent value. To keep your bar in original condition it is important to care and maintain it following these recommendations:



- Prior to exposure to the weather your bar should be treated to a Carnauba based polish on all exposed surfaces. It is recommended that this is performed on a six-monthly basis or following exposure to salt, mud, sand or other contaminants.
- As part of any Pre-Trip Preparation, or on an annual basis, it is recommended that a thorough visual inspection of the bar is carried out, making sure that all bolts and other components are torqued to the correct specification. Also check that all wiring sheaths, connectors, and fittings are free of damage. Replace any components as necessary. This service can be performed by your local authorized ARB Stockist.

FITTING REQUIREMENTS

REQUIRED TOOLS FOR FITMENT OF PRODUCT:

METRIC SOCKET SET	METRIC WRENCH SET
PHILLIPS HEAD SCREWDRIVERS	SMALL SPIRIT LEVEL
POWER DRILL 13MM (1/2") CAPACITY	13/32 (10.5MM) DRILL BIT
TORQUE WRENCH (9-77NM)	MARKING PEN
HALF ROUND FILE	SOFT HAMMER
METRIC TORX KEY SET	METRIC ALLEN KEY SET
WIDE MASKING TAPE	TAPE MEASURE OR RULER

HAVE AVAILABLE THESE SAFETY ITEMS WHEN FITTING PRODUCT:

Protective eyewear		Hearing protection	
--------------------	---	--------------------	---

NOTE: 'WARNING' notes in the fitting procedure relate to OHS situations, where to avoid a procedure be employed. If these notes and warnings are not heeded, injury may result.

FASTENER TORQUE SETTINGS:

SIZE	Torque (Nm)	Torque (lb-ft)
M6	9	7
M8	22	16
M10	44	32
M12 (PC8.8)	77	57
M12 (PC10.9)	95	71

PARTS LISTING

APPLICATION.	PART NO.	QTY	DESCRIPTION
BAR FITMENT	3195384	2	RECOVERY POINT SUIT BRONCO FORGED STEEL POWDER COATED
	3500810	1	LIGHTBAR WIRING LOOM
	3750966 L&R	1	BRACE WING SUIT BRONCO
	3750968 L&R	1	INFILL PANEL SUITS BRONCO
	3750969	1	RADAR BRKT SUITS BRONCO
	3750971 L&R	1	RECOVERY POINT REAR BRKT SUIT BRONCO
	3753020	1	RH OUTER CHASSIS BRKT SUIT BRONCO
	3753021	1	RH INNER CHASSIS BRKT SUIT BRONCO
	3753022	1	LH OUTER CHASSIS BRKT SUIT BRONCO
	3753023	1	LH INNER CHASSIS BRKT SUIT BRONCO
	4655099 L&R	1	WELDED ASSY RECOVERY POINT SUIT BRONCO
	6523500	1	PANEL STONE SHIELD SUIT BRONCO
	6523504 L&R	1	WING UNDER PANEL SUIT BRONCO
	180302	8	CABLE TIE 4.8 X 180 MM BLACK
	2125484	2	RECOVERY POINT WARNING LABEL
	3163222	2	PLUG SNSR BLANKING PAIR
	3195388	2	PLATE ADJUSTMENT SHIM
	3540290	1	SENSOR SURROUND KIT (4)
	3750975 L&R	1	UNDER PANEL BRKT SUIT BRONCO
	4581040	2	WASHER FLAT M10x25x3 TZP480
	4581048	4	WASHER SPRING M10x1/8x1/8 TZP480
	4581081	4	WASHER FLAT M8x17x2 SS
	4581304	8	WASHER FLAT M6 SS
	4584324	8	WASHER FLAT M8x16.6x1.2 BTZP480
	4584329	25	WASHER FLAT M6x12.2x1.2 BTZP480
	4584363	28	WASHER FLAT M12x26x4 HV300 TZP480
	4584394	6	WASHER FLAT M10x24x6 ZP
	4721520	2	TUBE CRUSH MOUNT HJ100
	6151097	10	BOLT HXHD M12x1.25x50 PC8.8 ZP
	6151173	23	NUT FLANGE M6 ZNB480 SERRATED
	6151234	8	BOLT HXHD M8x1.25x25 PC8.8 BTZP480
	6151256	8	SCREW BHD M6x16 SS MG304
	6151295	4	SCREW BHD M8x20 SS A4-70
	6151301	8	NUT CAGED M8 3.3-4.7 1238-C
	6151321	2	NUT FLANGE M10x1.5 PC8.8 TZP480 SERRATED
	6151322	2	NUT HEX NYLOC M10x1.5 PC8 TZP480
	6151384	2	SCREW ST PHD 5.2x16 PH PC8.8 BTZP480
	6151402	25	BOLT HXHD M6x1.0x16 PC8.8 BZP
	6151480	12	NUT FLANGE M12x1.25 PC8.8 TZP480 SERRATED
	6151509	2	BOLT HXHD M10x1.5x110 PC8.8 ZNS480
	6151526	10	NUT CAGED M6 1.8-2.7 BZP480
	6151548	12	NUT FLANGE M8x1.25 PC8.8 BTZP480 SERRATED
	6151625	8	SCREW BHD M8x25 TX PC8.8 ZNB480 NYLON PATCH
	6151638	2	BOLT HXHD M10x1.5x40 PC8.8 TZP480
	6151657	4	NUT FLANGE M12x1.75 PC8 TZP480
	6151934	1	ALLEN KEY TORX T40
	6151936	6	BOLT HXHD M12x1.75x70 PC10.9 ZAB1000
	6821189	2	GROMMET RND FC 1500 080 090

PREPARATION OF VEHICLE



1. Remove plastic panels covering the bolts on the front bumper. (On some models these will also include the parking sensors).



2. Unclip the parking sensors from the housings but leave them connected to the loom.



3. Remove 6x bolts holding the under tray on and retain for refitting the under panel later.



4. Remove the 3x bolts per side holding the bumper on and discard.
5. Remove the bumper.



6. If fog lights are installed, remove these and set aside for later.



7. Remove the wiring harness for the parking sensors and fog lights and set aside for fitment into the ARB bar.

Note: mark the loom so it can be installed the correct way in the ARB bar.



8. Remove factory nut plates by loosening plastic nut on back of the chassis end plate.



9. Remove bolts holding on factory tie down points and set aside. If these have the integrated intercooler mounts, they will be re-used.



10. Remove factory radar cover and radar (if optional) by removing the 3x screws under the cover. Set these both aside as they will be re-used.

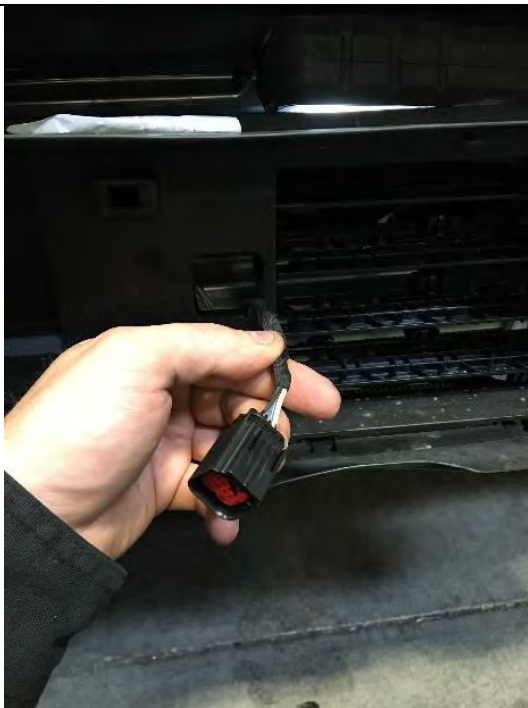


11. Remove the 4x bolts holding the ducting/shutters into the vehicle. Remove the connector and clips to get the harness off the shutters.

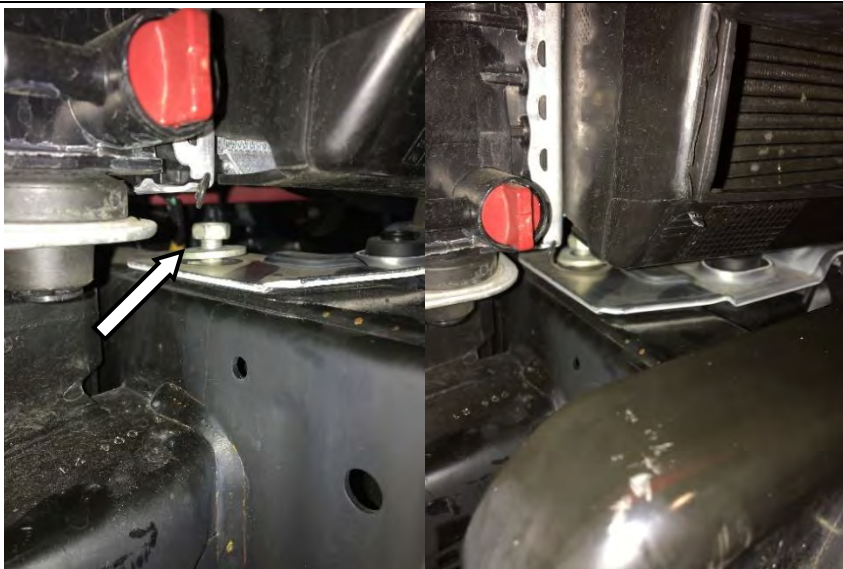


12. Using a razor, carefully strip back the loom to allow for more movement in the harness. Tape the exposed wires back up with black electrical tape.

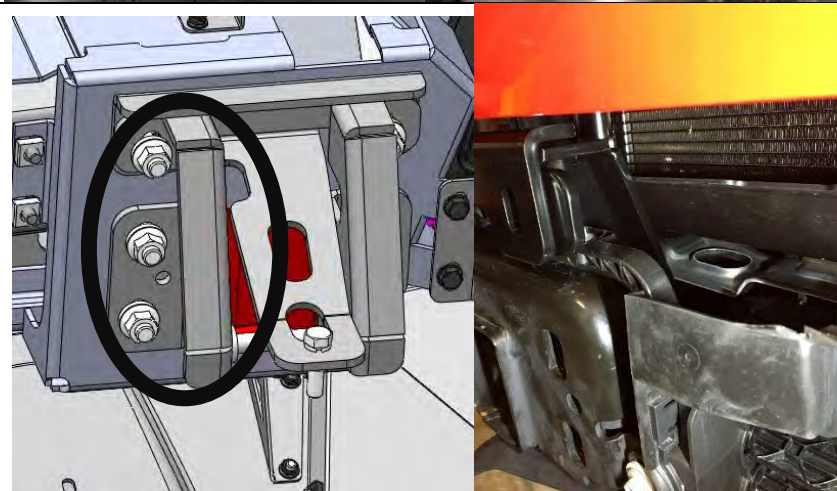
Warning: Cutting operations with a razor can be dangerous. Care must be taken to avoid injury.



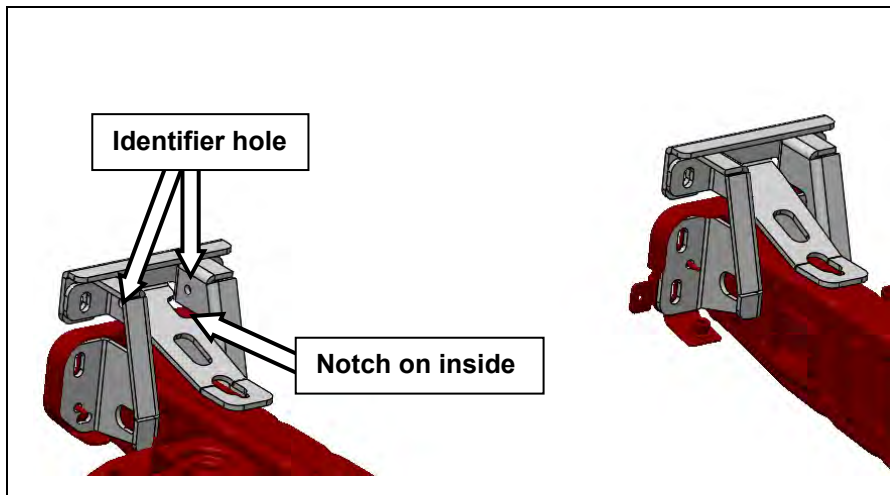
13. Put shutter back into place, leaving fasteners finger tight.



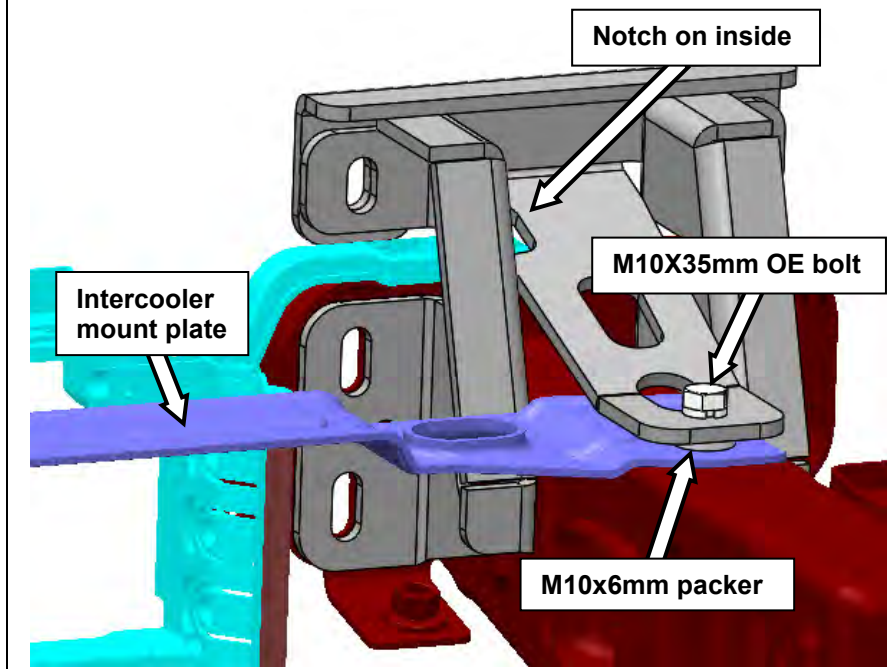
14. Loosen the top intercooler mount plate. This is a tight area to get tools into. Remove the bolt on each side and set aside for chassis bracket fitment.



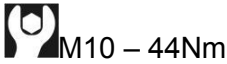
15. Rotate the intercooler mount plate back to allow for the LH & RH inboard chassis mounts to be fitted in place.



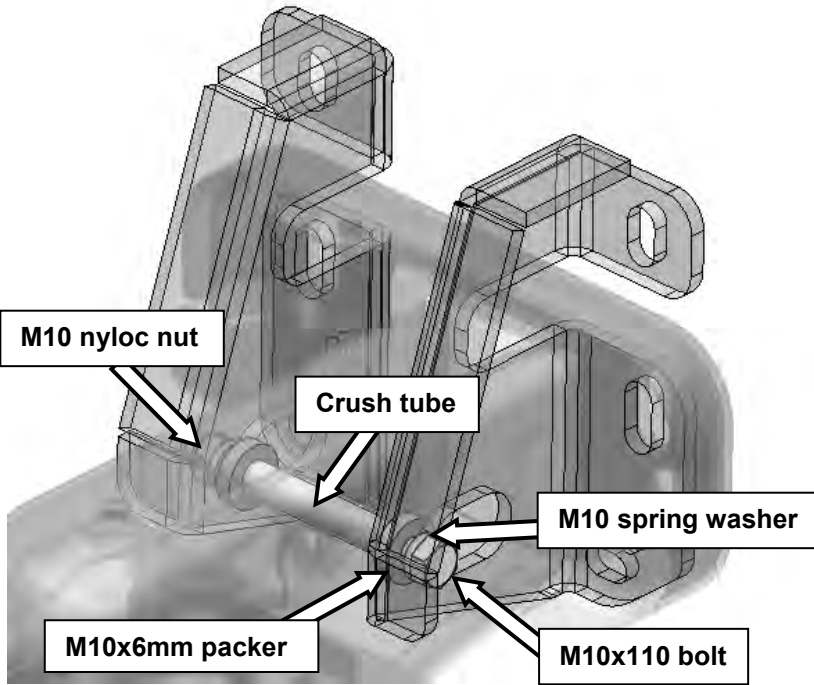
16. Chassis mount brackets are all handed (All 6 brackets are different). The upper brackets have a notch facing inboard. The upright brackets on the LHS have identifier holes up the top as shown.



17. With the inner chassis brackets in place, slide the intercooler mount plate back into place. Thread M10x35 OE bolt into place along with a M10x6mm packer a few threads and then slip upper brackets over the bolt/washer combo as shown. Once this is done, tighten bolt finger tight and repeat on the other side. Once both sides have the inner and upper reinforcement in place, top bolts can be tightened to specified torque.



18. Using the same plastic nut that came off with the nut plates, secure the outer reinforcements on each side of the frame.



19. Using the 2x M10x110mm bolts, 6mm packers, M10 spring washers, nyloc nut and crush tube, assemble the lower bolt for the chassis brackets as shown.

Leave finger tight.

Note: Spring washers sit on outside of brackets and 6mm packers sit on the inside

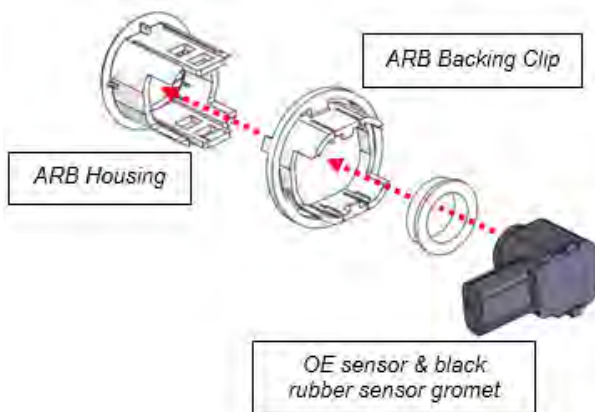
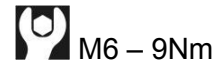


BAR ASSEMBLY



20. Bolt the OE Ford fog lights into the brackets with 4x M6x16 bolts, M6 washers, and M6 flange nuts per side.

Note: If your vehicle didn't come with fog lights, the 3580010 kit must be used. Wiring instructions are included with this kit.




Generic Image Only

21. Fit 2x parking sensor surrounds provided in the kit to the bar. If the vehicle didn't come with parking sensors, fit the parking sensor blanking plugs.






22. Using 4x M8x25 bolts, washers and flange nuts, bolt the reinforcement brackets to the bumper as shown.

 M8 – 22Nm




23. Assemble the radar (if equipped) as shown with 3x M6x16 bolts, washers, and flange nuts.

 M6 – 9Nm



24. Insert radar and bracket into the bumper with 4x M6x16 bolts, washers, and flange nuts. Use plastic cover that was set aside earlier to cover radar in bumper.

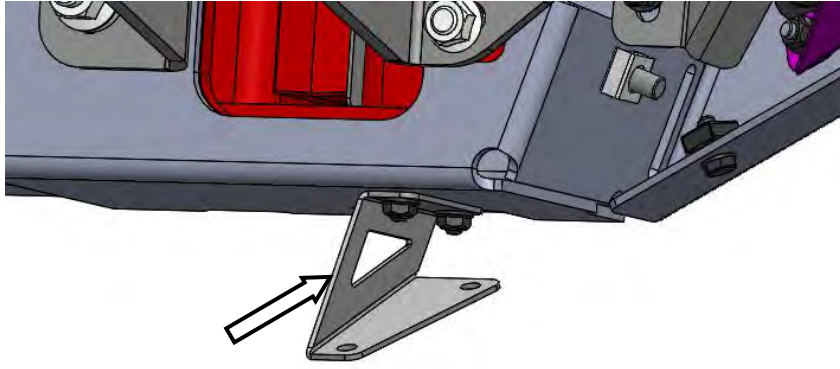
25. Route the wiring harness for the radar, parking sensors, and fog lights into the bumper before installing on vehicle.

 M6 – 9Nm

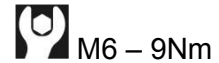


26. Using 4x M8 cage nuts per side, insert them into the locations shown.

Note: cage nuts are fitted to the outside of the bar.

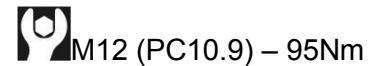


27. Using 2x M6x16 screws, washers, and nuts each side, attach lower pan brackets as shown to the bumper.



28. Using 3x M12x70 bolts, washers, and flange nuts per side, assemble recovery points as shown.

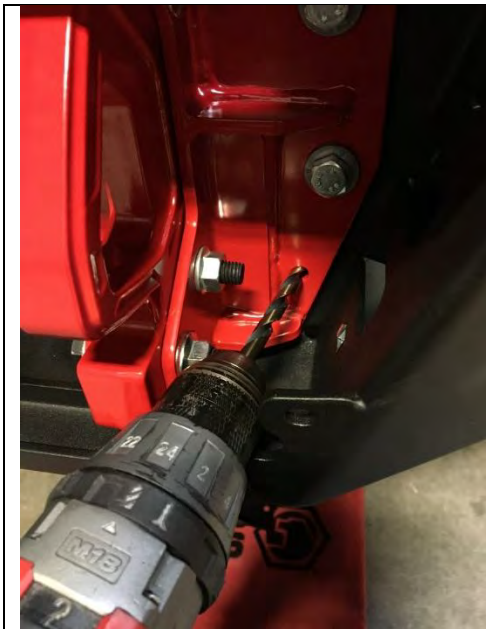
Note: The recovery point must be a snug fit in the brackets. If it is loose, stainless-steel shims can be used.



BAR INSTALLATION




29. Place recovery points into bumper and then with the aid of another person or a lift table, carefully lift the bumper up to the vehicle. Using M12x50 bolts, washers (both sides of nut and bolt), and flange nuts, bolt the bumper loosely to the vehicle.




Note: If drill bit is not long enough, mark the holes, remove the bar and then drill the holes.

30. Once satisfied with the bumper gaps, tighten the 10x mounting bolts. Also tighten the M10 through bolts assembled in step 19.

 M12 (PC8.8) – 77Nm


31. Drill pinning bolts with a 13/32 (10mm) drill bit.

32. Fit M10x50 bolts, washers and flange nuts and tighten to specified torque.

 M10 – 44Nm



33. Using 4x M8x25 button head screws per side, attach recovery point covers as shown.

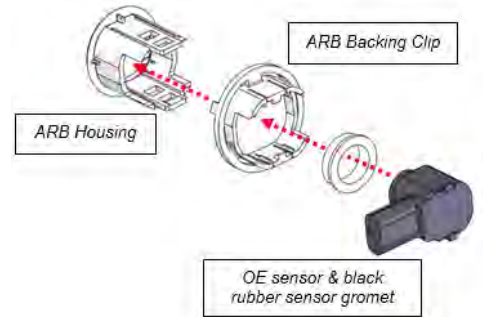
 M8 – 22Nm



34. Install 2x plastic gromets into the centre pan as shown for the licence plate (if required).




35. Install 2x centre parking sensor housings or blanks in centre pan.
36. Install the parking sensors (if equipped).



Generic Image Only




37. Place centre pan on vehicle and loosely fasten in place with 4x M8x20 stainless button head screws, stainless washers, and nuts.

 M8 – 22Nm



38. Using 4x stainless M6x16 button head screws, stainless washers, and nuts, fasten lower area of the centre pan to the mount brackets.

 M8 – 22Nm

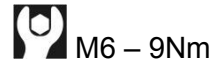


39. Using 5x M6 cage nuts per side, assemble wing under panels as shown.



40. Slide these into place and attach with 3x black M6x16 bolts and black washers as well as 2x stainless M6x16 button head screws and stainless washers per side.

Note: The stainless hardware goes on the silver centre panel.



M6 – 9Nm

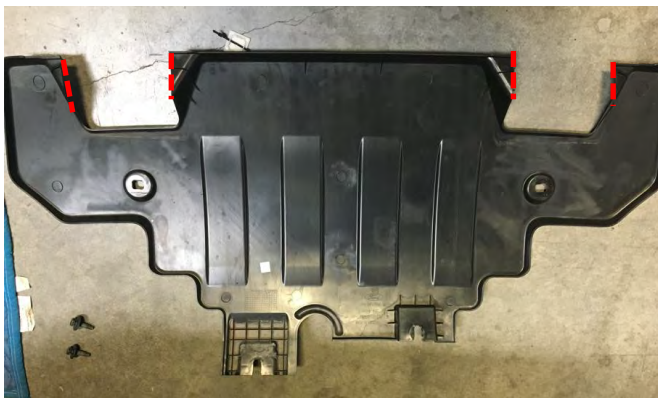


41. If vehicle came with front factory tie down points that incorporate the intercooler mounts, fit them back up now.



M12 (PC10.9) – 95Nm

42. Light bar wiring to be carried out as per instructions included in the 3500810 kit.



43. If your vehicle has a plastic stone guard with OE tow points, the area surrounding the tow points needs to be trimmed out as shown using an oscillating multitool or jig saw.



Warning: Drilling operations can result in flying metal debris, safety glasses should be worn.



44. Refit the OE stone guard using the factory bolts as shown.

NOTICE: ONCE BAR IS FITTED:

- ◆ Ensure all bolts are tensioned correctly.
- ◆ All wiring is clear of sharp edges or moving surfaces and secured properly.
- ◆ Piping is secured well away from sharp or moving components.
- ◆ Check all wiring and connections to fog lights, parking sensors and light bar and that they are functioning correctly.

FITTED PRODUCT – 2021 FORD BRONCO

