



OLD MAN EMU

FITTING INSTRUCTIONS

FK57

Ford Ranger PX

Mazda BT50 2010 on

Driveshaft bearing spacer kit

HAND TOOLS REQUIRED

Ring / Open end Spanner set (Metric)
Socket Set (Metric)

WORKSHOP TOOLS REQUIRED

Trolley Jack
Axle Stands
Adjustable Stand

OPTIONAL HAND TOOLS

Ratchet Spanner 21mm.

OPTIONAL WORKSHOP TOOLS

Vehicle Hoist

KIT CONTENTS

| Description | Qty. |
|---------------|------|
| Female Bolt | 2 |
| Spring washer | 2 |
| Flat Washer | 12 |



Fitment Notes

- This kit should be fitted after raised Old Man Emu suspension has been installed.
- Always fit same washer configuration to both sides of bearing mount.
- Female bolt **torque spec** - **44Nm** (Do not use a rattle gun to tighten).

Fitting Procedure

1. Before fitment test drive vehicle to observe severity and nature of any driveline vibrations. Note observations for comparison, after kit has been fitted.
2. Support driveshaft centre bearing with stand and remove nuts that secure bearing to chassis.
3. Lower bearing away from studs and place three flat washers on top of bearing mount as shown in fig 1.
4. Fit a spring washer then three flat washers to each of the female bolts as shown in fig 2.
Note - Must always use 6 washers + spring washer.
5. Raise bearing and fit female bolts. Tighten to 44Nm ensuring the flat washers are aligned concentrically with the female bolt to prevent bolt bottoming out on misaligned washer. Do not over tighten or use a rattle gun.
6. After fitment test drive vehicle again. Compare with pre fitment notes. If no improvement in driveline vibration is observed after fitment of kit with initial 3/3 configuration, remove and refit with a different ratio of washers above and below the bearing mount (see fig 3). Continue to try different configurations until driveline vibration is reduced to a satisfactory level.

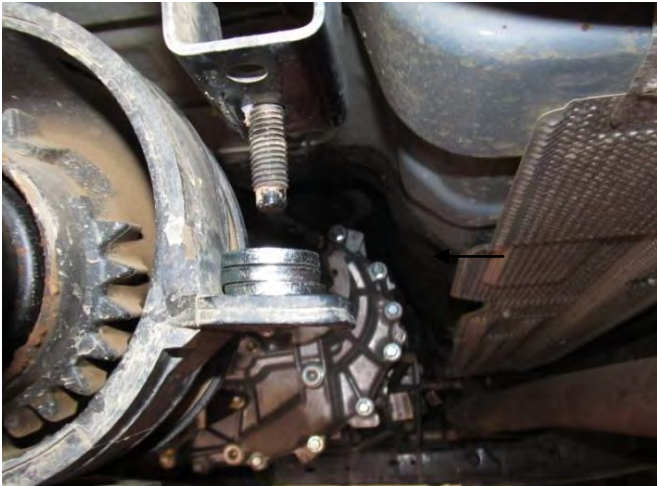
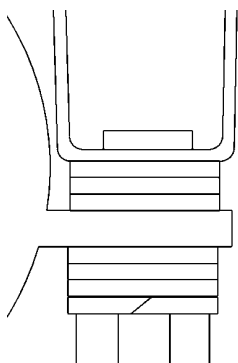


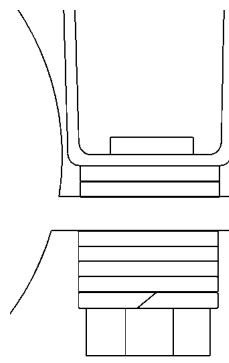
Figure 1: Washers on bearing mount.



Figure 2: washers on female bolt



Initial Configuration (3/3):
6 washers total.
3 above flange.
3 below flange.



Possible New Configuration (2/4):
6 washers total.
2 above flange.
4 below flange.

Figure 3: Example washer configurations.